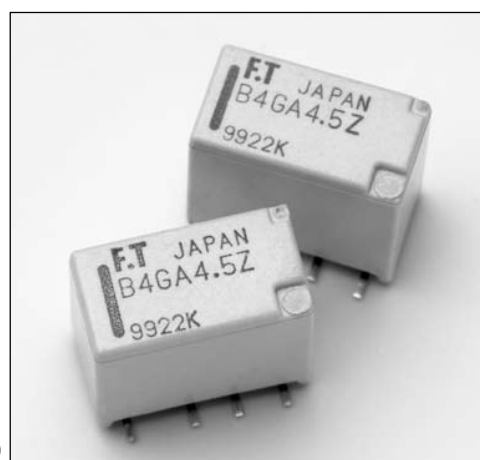


ULTRA MINIATURE 2-POLES 2A (SLIM PROFILE SIGNAL RELAY) FTR-B4 Series

RoHS compliant

■ FEATURES

- DPDT 2C
- Ultra miniature slim type relay for surface mounting
Height: 9.3 mm maximum (THT)
10 mm maximum (SMT)
Weight: Approximately 1.0 g
- Conforms to Bellcore & FCC part 68, and Telcordia & FCC part 68
- Conforms to UL1950 / CSA 950, IEC 950 / EN60950 spacing and high breakdown voltage
Clearance: 1.0mm
Creepage: 1.6mm
Basic insulation, 150V working voltage, pollution degree 2
- High reliable bifurcated gold overlay silver contact
- Low power consumption 140 mW (standard), 100 mW (latching)
- RoHS compliant since date code: 0430B8
Please see page 8 for more information



■ ORDERING INFORMATION

[Example] FTR-B4 C A 4.5 Z -B 05
 (a) (b)(c) (d) (e) (f) (g)

大豪电子
 电话: 0755-83233025
<http://www.szdahao.com>
<http://www.very-tec.com>

(a)	Series Name	FTR-B4 Series
(b)	Terminal type	C: Through hole G: surface mount S: surface mount type - space saving
(c)	Operation function	A: standard type B: latching type (1 coil)
(d)	Coil voltage	Nominal voltag
(e)	Contact material	Z: gold overlay silver nickel (standard) P: gold overlay silver palladium
(f)	Relay enclosing direction*	B: standard enclosing direction
(g)	Number of relays per reel*	05: 500 (standard)

Remarks: Actual marking on relay would not carry code FTR and be as below:

Ordering code Actual marking

Notes: *FTR-B4CA4.5Z → B4CA4.5Z

- Only surface mount types (G and S) are applicable

- All relays are packaged in tubes unles P/N ends with -B05

FTR-B4 Series

■ PART NUMBERS

Standard type

Ordering Part Number	Series	Terminal Type	Operation	Coil Voltage	Contact Material
FTR-B4CA1.5Z	FTR-B4	C: through hole	A: mono-stable (standard type)	1.5	Z: Au-Ag-Ni P: Au-Ag-Pd
FTR-B4CA003Z				3	
FTR-B4CA4.5Z				4.5	
FTR-B4CA006Z				6	
FTR-B4CA009Z				9	
FTR-B4CA012Z				12	
FTR-B4CA024Z				24	
FTR-B4GA1.5Z		G: surface mount		1.5	
FTR-B4GA003Z				3	
FTR-B4GA4.5Z				4.5	
FTR-B4GA006Z				6	
FTR-B4GA009Z				9	
FTR-B4GA012Z				12	
FTR-B4GA024Z		24			
FTR-B4SA1.5Z		S: space saving surface mount		1.5	
FTR-B4SA003Z				3	
FTR-B4SA4.5Z				4.5	
FTR-B4SA006Z				6	
FTR-B4SA009Z	9				
FTR-B4SA012Z	12				
FTR-B4SA024Z	24				

FTR-B4 Series

Latching type (1 coil)

Ordering Part Number	Series	Terminal Type	Operation	Coil Voltage	Contact Material	
FTR-B4CB1.5Z	FTR-B4	C: through hole	B: latching	1.5	Z: Au-Ag-Ni P: Au-Ag-Pd	
FTR-B4CB003Z				3		
FTR-B4CB4.5Z				4.5		
FTR-B4CB006Z				6		
FTR-B4CB009Z				9		
FTR-B4CB012Z				12		
FTR-B4CB024Z				24		
FTR-B4GB1.5Z		G: surface mount		B: latching		1.5
FTR-B4GB003Z						3
FTR-B4GB4.5Z						4.5
FTR-B4GB006Z						6
FTR-B4GB009Z						9
FTR-B4GB012Z						12
FTR-B4GB024Z						24
FTR-B4SB1.5Z		S: space saving surface mount		B: latching		1.5
FTR-B4SB003Z						3
FTR-B4SB4.5Z						4.5
FTR-B4SB006Z						6
FTR-B4SB009Z						9
FTR-B4SB012Z						12
FTR-B4SB024Z						24

■ COIL DATA CHART

Standard type

Coil Voltage	Nominal Voltage (VDC)	Max. Coil Voltage* ¹	Coil Resistance (±10%)	Must Operate Voltage* ²	Must Release Voltage* ²	Nominal Power (mW)
1.5	1.5	3.53 VDC	16.1 Ω	1.13 VDC	0.15 VDC	140
003	3	7.05 VDC	64.3 Ω	2.25 VDC	0.3 VDC	
4.5	4.5	10.58 VDC	145 Ω	3.38 VDC	0.45 VDC	
006	6	14.10 VDC	257 Ω	4.5 VDC	0.6 VDC	
009	9	21.15 VDC	579 Ω	6.75 VDC	0.9 VDC	
012	12	28.20 VDC	1,028 Ω	9.0 VDC	1.2 VDC	
024	24	56.40 VDC	2,504 Ω	18.0 VDC	2.4 VDC	230

*1: No contact current at 20°C. Please see 'operating range' data for other conditions.

*2: Specified values are subject to pulse wave voltage.

FTR-B4 Series

Latching type (1 coil)

Coil Voltage	Nominal Voltage (VDC)	Max. Coil Voltage* ¹	Coil Resistance (±10%)	Must Operate Voltage* ²	Must Release Voltage* ²	Set/Re-set current	Nominal Power (mW)
1.5	1.5	3.53 VDC	22.5 Ω	1.13 VDC	-0.13 VDC	50mA	100
003	3	7.05 VDC	90 Ω	2.25 VDC	-2.25 VDC	25mA	
4.5	4.5	10.58 VDC	203 Ω	3.38 VDC	-3.38 VDC	17mA	
006	6	14.10 VDC	360 Ω	4.5 VDC	-4.5 VDC	13mA	
009	9	21.15 VDC	810 Ω	6.75 VDC	-6.75 VDC	8mA	
012	12	28.20 VDC	1,440 Ω	9.0 VDC	-9.0 VDC	6mA	
024	24	56.40 VDC	4,800 Ω	18.0 VDC	-18.0 VDC	4mA	120

Note: All values in the table are measured at 20°C.

*1: No contact current at 20°C. Please see 'operating range' data for other conditions.

*2: Specified values are subject to pulse wave voltage.

■ SPECIFICATIONS

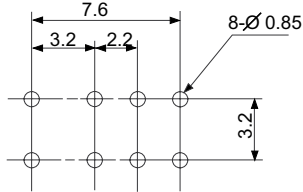
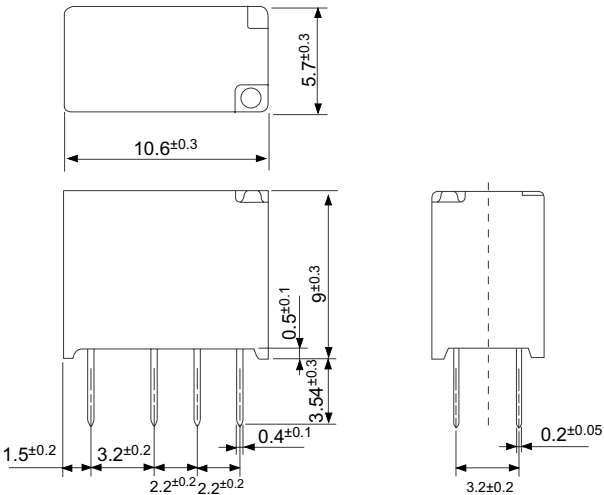
		Standard Type	Latching Type
		FTR-B4 () A	FTR-B4 () B
Contact	Arrangement	2 Form C	
	Contact material	Gold overlay silver nickel / Gold overlay silver palladium	
	Contact type	Bifurcated contact (cross-bar)	
	Contact resistance (initial value)	100mΩ maximum at 6VDC 1	
	Contact rating	30 VDC 1A, 125 VAC 0.3 A (resistive)	
	Maximum carrying current	2A	
	Maximum switching power	62.5 VA / 30W	
	Maximum switching voltage	250 VAC/ 220 VDC	
	Minimum switching load*	10m VDC, 0.01mA*	
Coil	Nominal power (at 20°C)	140 mW up to 230 mW	100 mW up to 130 mW
	Operate power (at 20°C)	80 mW up to 130 mW	57 mW up to 68 mW
	Operating temperature (no frost)	-40°C to +85°C	
Time value	Operate (at nominal voltage, without bounce)	3ms maximum	3ms maximum (set)
	Release (at nominal voltage, without bounce)	3ms maximum	3ms maximum (reset)
Life	Mechanical	50 x 10 ⁶ operations	20 x 10 ⁶ operations
	Electrical (resistive load)	DC load	100 x 10 ³ ops. min. at 1A, 30 VDC (at 0.5 Hz)
		AC load	100 x 10 ³ ops. min. at 0.3A, 125VAC (at 0.5 Hz)
Vibration resistance	Misoperation	10 to 55 Hz at double amplitude of 3 mm	
	Endurance	10 to 55 Hz at double amplitude of 5 mm	
Shock resistance	Misoperation	Min. 750 m/s ²	
	Endurance	Min. 1,000 m/s ²	
Weight	Approximately 1.0 g		
US/CSA	Contact rating	0.5A, 125 VAC; 1A, 30 VDC; 0.3A, 110 VDC	

*1 Minimum switching loads mentioned above are reference values. Please perform the confirmation test with the actual load before production since reference values may vary according to switching frequencies, environmental conditions and expected reliability levels.

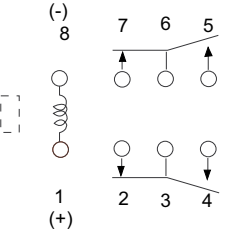
FTR-B4 Series

■ DIMENSIONS AND SCHEMATICS

Through hole type

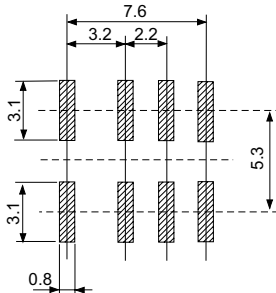
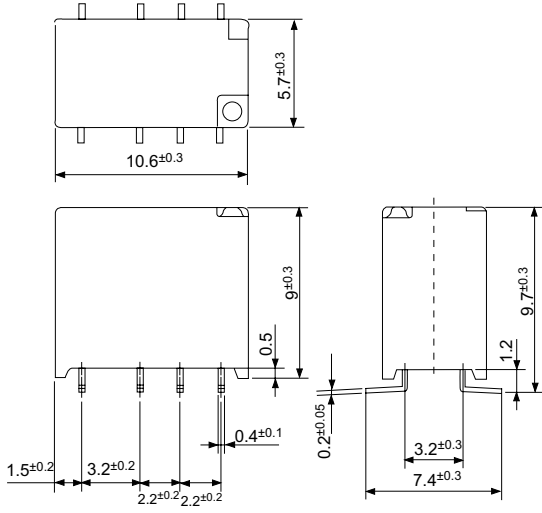


Recommended mounting pad
(Tolerance: ±0.1mm)

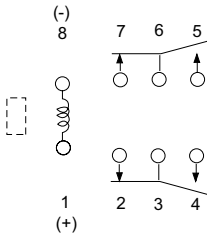


Terminal designations
(Top view de-energized position)

Surface mount type (standard)



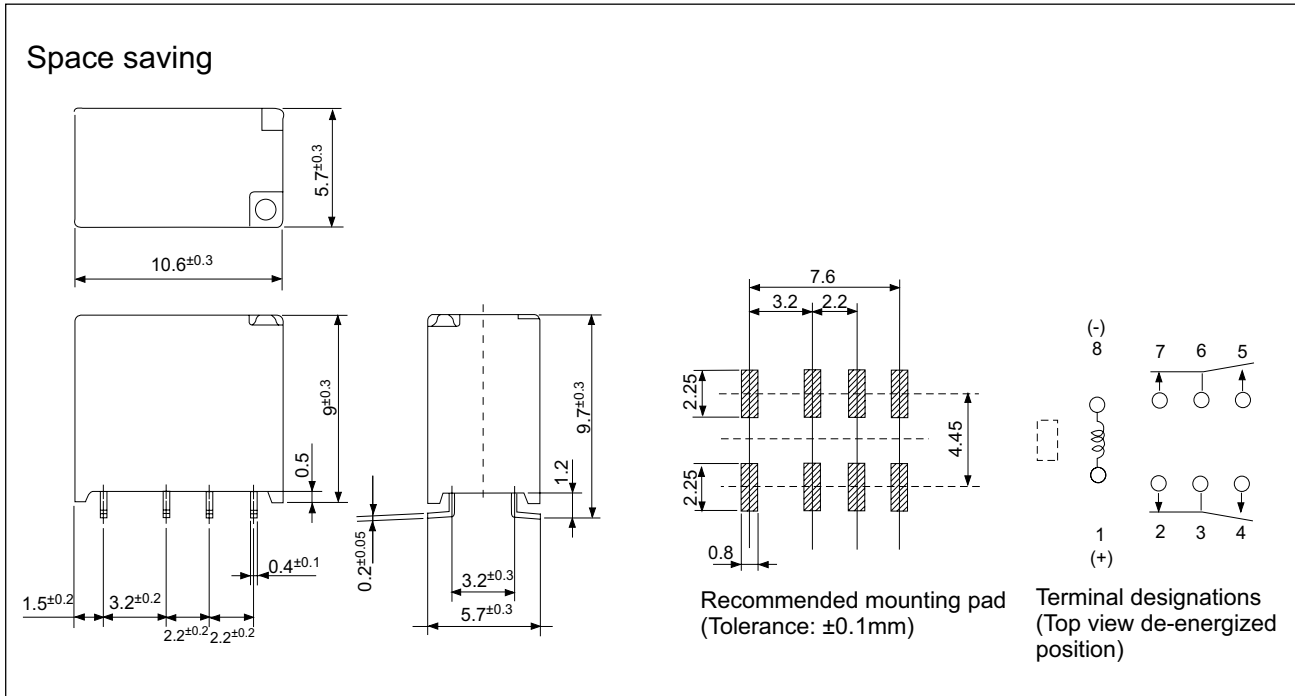
Recommended mounting pad
(Tolerance: ±0.1mm)



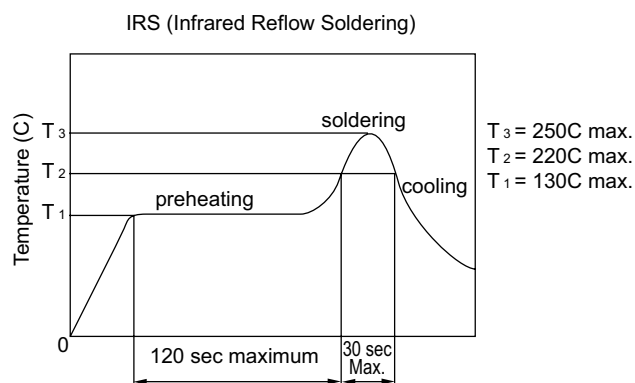
Terminal designations
(Top view de-energized position)

FTR-B4 Series

■ DIMENSIONS AND SCHEMATICS



■ RECOMMENDED SOLDERING CONDITIONS FOR SMT (TEMPERATURE PROFILE)



- Note:
1. Temperature profiles show the temperature of PC board surface.
 2. Please perform soldering test with your actual PC board before mass production, since the temperatures of PC board surfaces vary according to the size of PC board, status of parts mounting and heating method.

■ PRECAUTIONS

- For details on general precautions, refer to the section on technical descriptions.
- Since this is a polarized relay, follow the instructions of the internal wiring diagram for the +/- connections of the coil.
- Note that the terminal layout and internal wiring of the surface mount relay are a top view.
- SMT versions of the FTR-B4 relays have moisture sensitivity level 3, acc. JEDEC-J-STD-020D
- SMT versions of the FTR-B4 relays will be shipped in "Dry Pack". Relays have an "Out of Bag" storage time of 192h.