

AC SOLID STATE RELAY

Zero Turn On Type	KB40C02A	KB40C05A
	KB40C03A	KB40C06A
	KB40C04A	
Random Turn On Type	KB40R02A	KB40R05A
	KB40R03A	KB40R06A
	KB40R04A	

KB SERIES

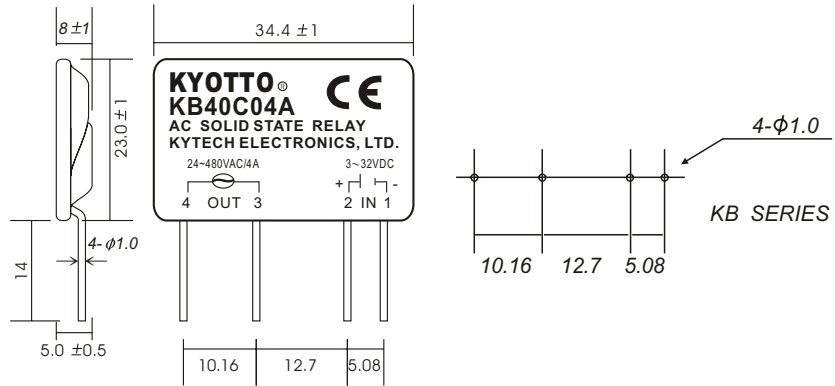


SPECIFICATIONS

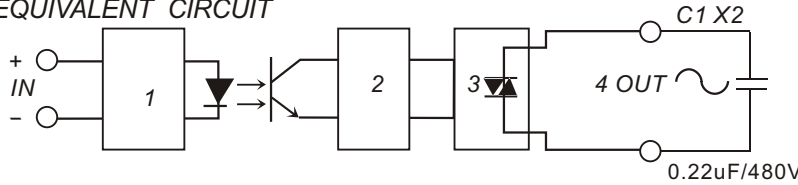
MODEL NO.	CONTROL VOLTAGE RANGE	MUST TURN OFF VOLTAGE	INPUT IMPEDANCE	MAX LOAD CURRENT	LOAD VOLTAGE RANGE	MIN BLOCKING VOLTAGE	MAX OFF-STATE LEAKAGE	FREQUENCY RANGE	MAX 1-CYCLE PEAK SURGE
KB40C02A	3 TO 32 VDC	MAX 1.0 VDC	1.5 Kohm	2A	24-480VAC	1200VAC	LESS 5 mA	47-70HZ	20A
KB40C03A	3 TO 32 VDC	MAX 1.0 VDC	1.5 Kohm	3A	24-480VAC	1200VAC	LESS 5 mA	47-70HZ	30A
KB40C04A	3 TO 32 VDC	MAX 1.0 VDC	1.5 Kohm	4A	24-480VAC	1200VAC	LESS 5 mA	47-70HZ	40A
KB40C05A	3 TO 32 VDC	MAX 1.0 VDC	1.5 Kohm	5A	24-480VAC	1200VAC	LESS 5 mA	47-70HZ	50A
KB40C06A	3 TO 32 VDC	MAX 1.0 VDC	1.5 Kohm	6A	24-480VAC	1200VAC	LESS 5 mA	47-70HZ	60A

MODEL NO.	MAX OFF-STATE ΔV_{ct}	MAX ON-STATE VOLTAGE DROP	ISOLATE IMPEDENCE	DILECTRIC STRENGTH INPUT/OUTPUT	DILECTRIC STRENGTH INPUT/OUTPUT/CASE	TURN ON TIME	TURN OFF TIME	CAPACITANCE IN-OUT	WEIGHT (g)
KB40C02A	500 V/ μ SEC	2.0VAC	10^9 ohm	2500 VACrms		LESS 2 mSec	LESS 1/2 AC CYCLE	LESS 15 PF	12 g
KB40C03A	500 V/ μ SEC	2.0VAC	10^9 ohm	2500 VACrms		LESS 2 mSec	LESS 1/2 AC CYCLE	LESS 15 PF	12 g
KB40C04A	500 V/ μ SEC	2.0VAC	10^9 ohm	2500 VACrms	—	LESS 2 mSec	LESS 1/2 AC CYCLE	LESS 15 PF	12 g
KB40C05A	500 V/ μ SEC	2.0VAC	10^9 ohm	2500 VACrms		LESS 2 mSec	LESS 1/2 AC CYCLE	LESS 15 PF	12 g
KB40C06A	500 V/ μ SEC	2.0VAC	10^9 ohm	2500 VACrms	—	LESS 2 mSec	LESS 1/2 AC CYCLE	LESS 15 PF	12 g

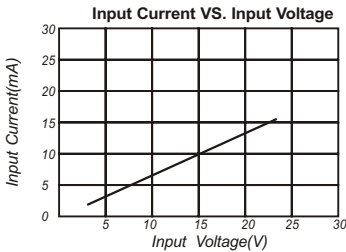
OUTLINE DIMENSIONS (unit:mm)



EQUIVALENT CIRCUIT

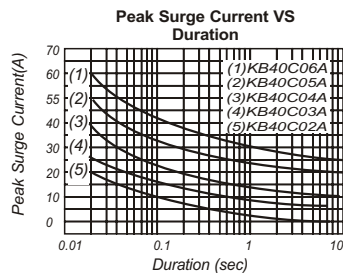
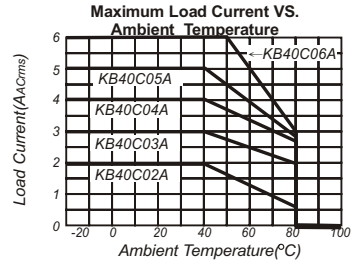


CHARACTERISTIC CURVES



Attention:

In order to be in compliance with the EMC Directive an additional common mode choke and X2 capacitor at the output is required if the SSR is operated as single component. In case the SSR is incorporated in an appliance the existing EMI Filter may provide the required EMI suppesion. The EMI Filter Must be placed as close as possible to the output terminats. See also above.



大豪电子
 电话: 0755-83233025
<http://www.szdahao.com>
<http://www.very-tec.com>

