



Devices thru Material Innovation

NEC/TOKIN

Vol. 10

Noise Filters

大豪电子

电话:0775-83233025

<http://www.szdahao.com>

<http://www.very-tec.com>



- All specifications in this catalog and production status of products are subject to change without notice. Prior to the purchase, please contact NEC TOKIN for updated product data.
- Please request for a specification sheet for detailed product data prior to the purchase.
- Before using the product in this catalog, please read "Precautions" and other safety precautions listed in the printed version catalog.

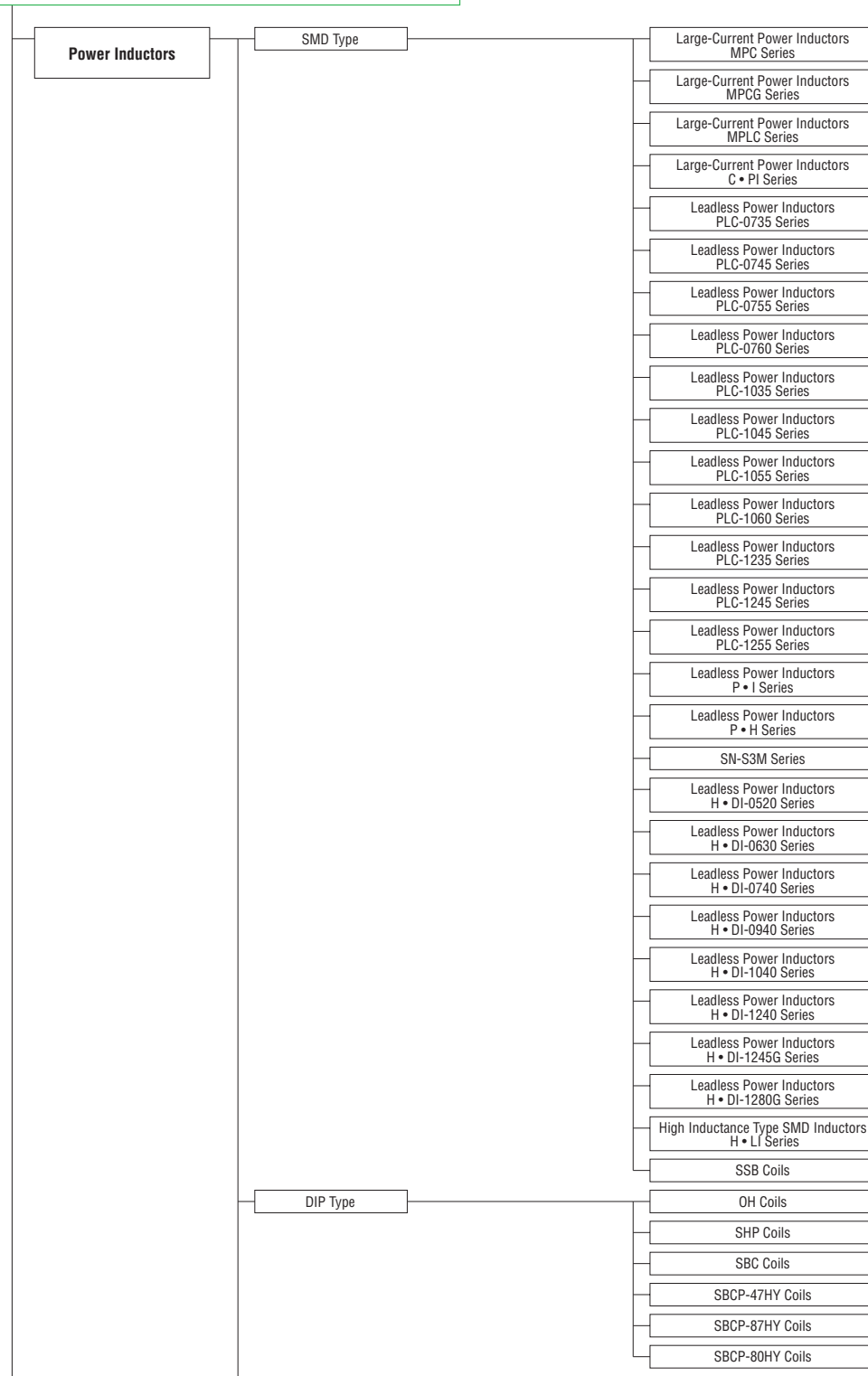
Contents

| | |
|--|----|
| Classification of NEC TOKIN's EMI suppression parts | 3 |
| Casing Type | |
| New Products | |
| LF-SF Series Three-Phase Type | 8 |
| GT-SF Series Single-Phase Type | 9 |
| Metal box | |
| LF Series Small Current Type | 10 |
| LF Series Small Current Type with Screw Terminal | 11 |
| LF Series Screw Terminal Type | 13 |
| LF Series Large Current Type | 15 |
| LF Series Three-Phase Type | 16 |
| LF Series For Inverters | 18 |
| LF Series Compliance with CE Marking (LF-3000 Series) .. | 21 |
| LH Series Low-Frequency Inverters | 23 |
| LH Series Compliance with CE Marking (LH-4 Series) .. | 25 |
| HFP Series | 26 |
| GT Series Screw Terminal | 28 |
| GT Series Faston Terminal | 30 |
| GT Series For VCCI | 32 |
| GF Series | 33 |
| Metal cylinder | |
| VU Series | 34 |
| VC Series | 36 |
| VG-FPZ Series for inverter installed home appliances' surge control .. | 37 |
| RG Series | 38 |
| Plastic box | |
| MR Series | 40 |
| MA Series | 42 |
| Inlet Type | |
| GL Series C Type | 43 |
| GL Series F, FV, FVP Type | 45 |
| GL Series H Type | 47 |
| GL Series M Type | 49 |
| | |
| TÜV Rheinland Japan Ltd. Certification Numbers | 50 |



- All specifications in this catalog and production status of products are subject to change without notice. Prior to the purchase, please contact NEC TOKIN for updated product data.
- Please request for a specification sheet for detailed product data prior to the purchase.
- Before using the product in this catalog, please read "Precautions" and other safety precautions listed in the printed version catalog.

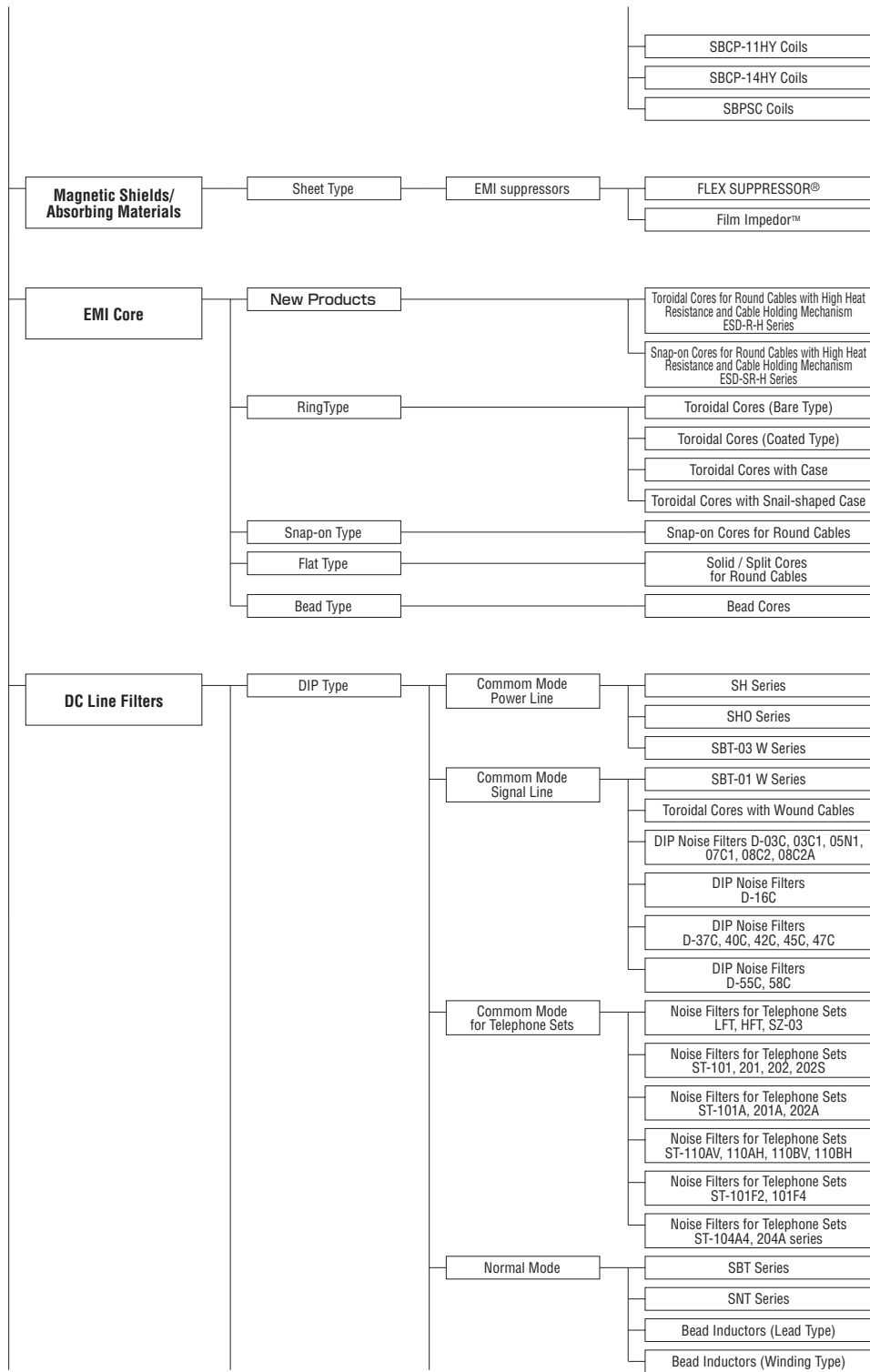
Classification of NEC TOKIN's EMI suppression parts



(Continued)



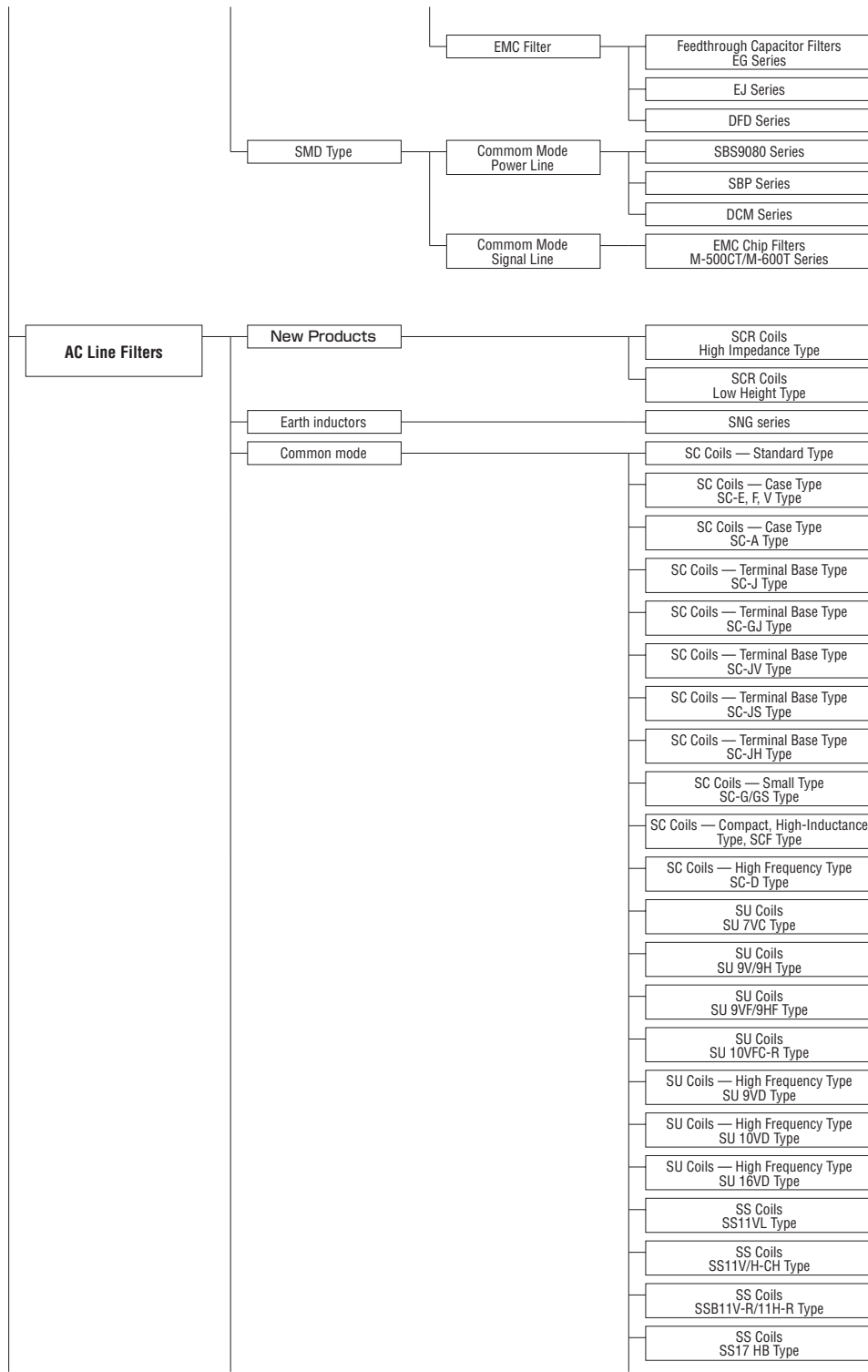
- All specifications in this catalog and production status of products are subject to change without notice. Prior to the purchase, please contact NEC TOKIN for updated product data.
- Please request for a specification sheet for detailed product data prior to the purchase.
- Before using the product in this catalog, please read "Precautions" and other safety precautions listed in the printed version catalog.



(Continued)



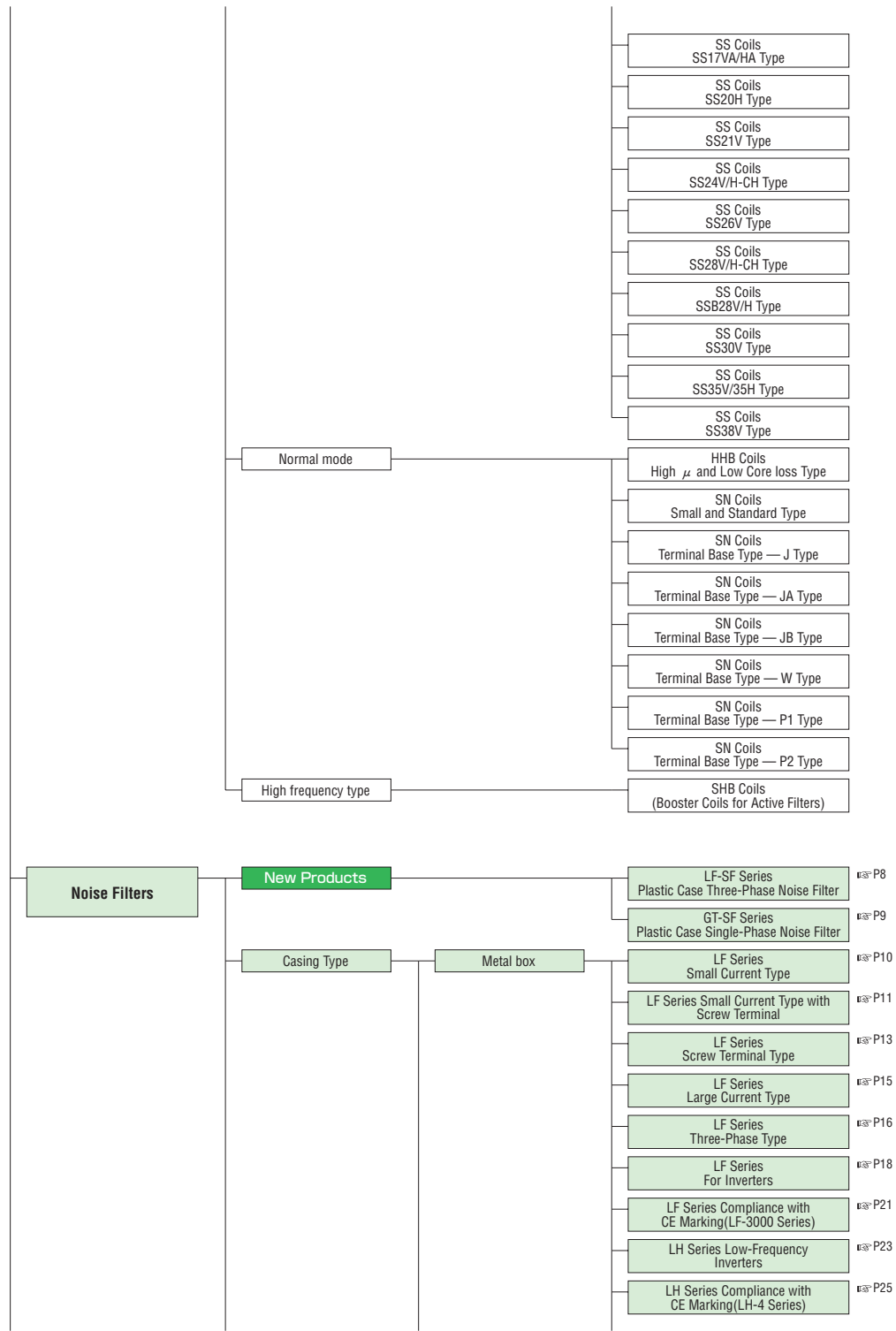
- All specifications in this catalog and production status of products are subject to change without notice. Prior to the purchase, please contact NEC TOKIN for updated product data.
- Please request for a specification sheet for detailed product data prior to the purchase.
- Before using the product in this catalog, please read "Precautions" and other safety precautions listed in the printed version catalog.



(Continued)



- All specifications in this catalog and production status of products are subject to change without notice. Prior to the purchase, please contact NEC TOKIN for updated product data.
- Please request for a specification sheet for detailed product data prior to the purchase.
- Before using the product in this catalog, please read "Precautions" and other safety precautions listed in the printed version catalog.

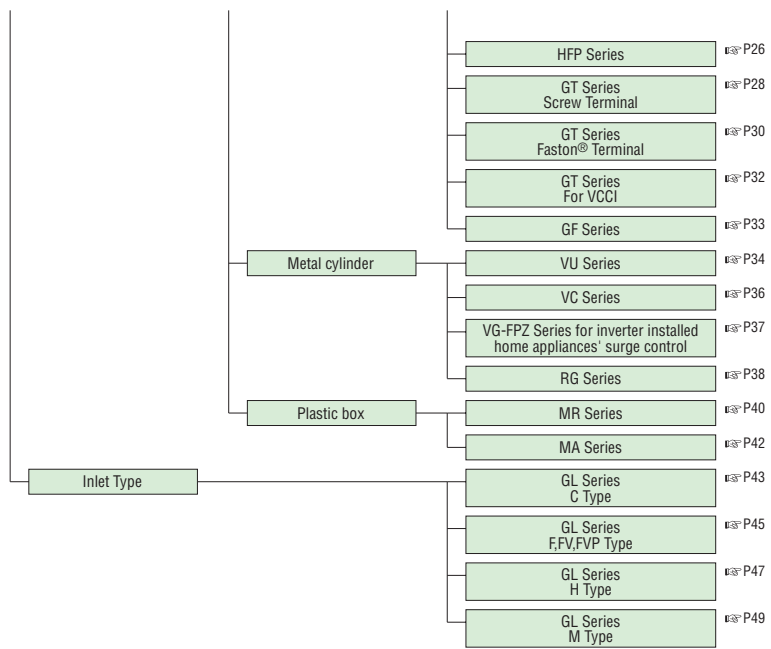


(Continued)

Noise Filters VOL.10



- All specifications in this catalog and production status of products are subject to change without notice. Prior to the purchase, please contact NEC TOKIN for updated product data.
- Please request for a specification sheet for detailed product data prior to the purchase.
- Before using the product in this catalog, please read "Precautions" and other safety precautions listed in the printed version catalog.



大豪电子
 电话: 0775-83233025
<http://www.szdahao.com>
<http://www.very-tec.com>



- All specifications in this catalog and production status of products are subject to change without notice. Prior to the purchase, please contact NEC TOKIN for updated product data.
- Please request for a specification sheet for detailed product data prior to the purchase.
- Before using the product in this catalog, please read "Precautions" and other safety precautions listed in the printed version catalog.

Plastic Case Three-Phase Noise Filter

LF-SF Series

[RoHS Compliant]



Features

- Plastic shell of the product eliminates resin filling (weight reduction)
- DIN rail installation types available
- Featuring mechanism of self-jump-up to prevent loss of screw (easy to install)
- Safety cover integrating contact terminal

Applications

- Industrial equipment, machine tools

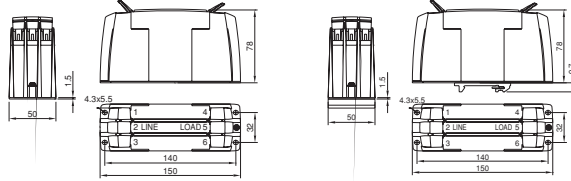
| Model ※1 | Rated voltage AC/DC(V) | Rated current AC/DC(A) | Withstanding voltage 2 sec., line to ground AC(V) | Insulation resistance 500VDC 1 min., line to ground (MΩ)min. | Leakage current 380V/50Hz, (mA)max. | Self-temperature rise (K)max. | Operating temperature range (°C) | Certified standard | Weight (g) ※2 |
|-----------------|---------------------------|---------------------------|---|---|---|----------------------------------|-------------------------------------|--------------------|------------------|
| LF-3100SF-10/20 | 520 | 10 | 3000 | 6000 | 0.48 | 50 | -25~+100 | UL, CSA, ENEC14 | 520 / 540 |
| LF-3200SF-10/20 | 520 | 20 | 3000 | 6000 | 0.48 | 50 | -25~+100 | UL, CSA, ENEC14 | 520 / 540 |
| LF-3300SF-10/20 | 520 | 30 | 3000 | 6000 | 0.48 | 50 | -25~+100 | UL, CSA, ENEC14 | 520 / 540 |
| LF-3500SF-10/20 | 520 | 50 | 3000 | 6000 | 0.48 | 50 | -25~+100 | UL, CSA, ENEC14 | 950 / 960 |

※1 : Model names ending with '10' indicate normal types, and those ending with '20' indicate DIN rail types. ※2 : Normal type / DIN rail type (DIN rails not included in the products)

Shape and Dimensions

● LF-3**0SF-10 (Normal type)

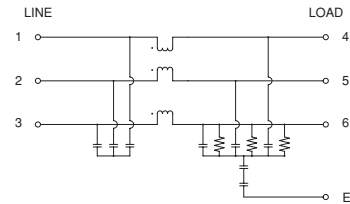
● LF-3**0SF-20 (DIN rail type)



| Model | A | B | C | E | F | G | H | J | X |
|-------------------------|-----|----|----|-----|----|---------|-----|----|-----|
| Normal type 10,20,30A | 150 | 50 | 78 | 140 | 32 | 4.3x5.5 | 1.5 | M4 | |
| Normal type 50A | 177 | 65 | 84 | 162 | 44 | 5.3x6.5 | 1.5 | M5 | |
| DIN rail type 10,20,30A | 150 | 50 | 78 | | | | 1.5 | M4 | 9.7 |
| DIN rail type 50A | 177 | 65 | 84 | | | | 1.5 | M5 | 9.7 |

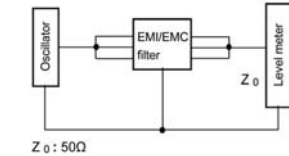
[mm]

Circuit Diagram

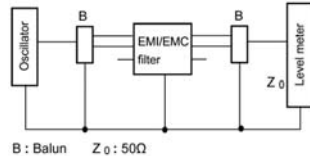


Measuring Circuit

● Common mode

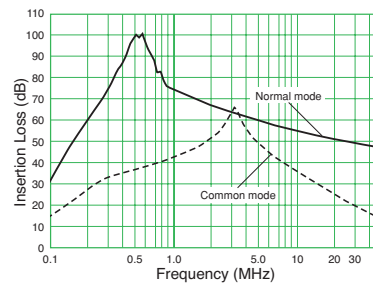


● Normal mode



Attenuation (Static Characteristics)

Representative example: 50A



- All specifications in this catalog and production status of products are subject to change without notice. Prior to the purchase, please contact NEC TOKIN for updated product data.
- Please request for a specification sheet for detailed product data prior to the purchase.
- Before using the product in this catalog, please read "Precautions" and other safety precautions listed in the printed version catalog.

Plastic Case Single-Phase Noise Filter

GT-SF Series

[RoHS Compliant]



Features

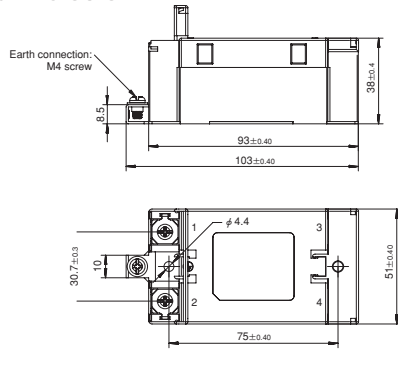
- Plastic shell of the product eliminates resin filling (weight reduction)
- DIN rail installation types available
- Featuring mechanism of self-jump-up to prevent loss of screw (easy to install)
- Safety cover integrating contact terminal

Applications

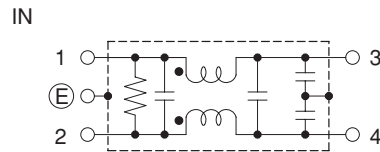
- Industrial equipment, electronic devices

| Model ※1 | Rated voltage AC/DC(V) | Rated current AC/DC(A) | Withstanding voltage 2 sec., line to ground AC(V) | Insulation resistance 500VDC 1 min., line to ground (MΩ)min. | Leakage current 250V/50Hz, (mA)max. | Self-temperature rise (K)max. | Operating temperature range (°C) | Certified standard | Weight (g) ※2 |
|--------------|---------------------------|---------------------------|---|---|---|-------------------------------------|---|-----------------------|---------------------|
| GT-2060SF-10 | 250 | 6 | 2500 | 6000 | 0.56 | 45 | -25~+100 | cCSAus,ENEC14 | 210 |
| GT-2100SF-10 | 250 | 10 | 2500 | 6000 | 0.56 | 45 | -25~+100 | cCSAus,ENEC14 | 220 |
| GT-2160SF-10 | 250 | 16 | 2500 | 6000 | 0.56 | 45 | -25~+100 | cCSAus,ENEC14 | 220 |
| GT-2200SF-10 | 250 | 20 | 2500 | 6000 | 0.56 | 45 | -25~+100 | cCSAus,ENEC14 | 220 |

Shape and Dimensions

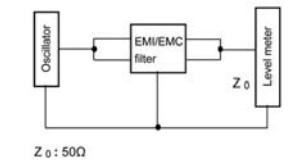


Circuit Diagram

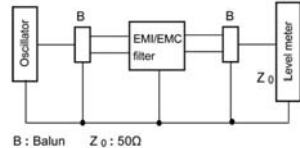


Measuring Circuit

Common mode

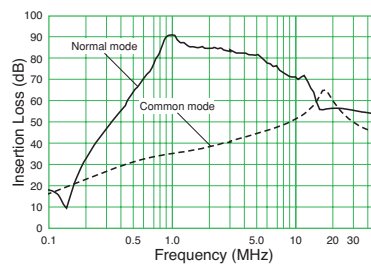


Normal mode



Attenuation(Static Characteristics)

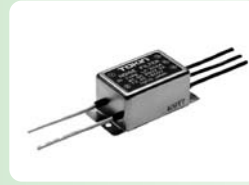
Representative example: 20A



- All specifications in this catalog and production status of products are subject to change without notice. Prior to the purchase, please contact NEC TOKIN for updated product data.
- Please request for a specification sheet for detailed product data prior to the purchase.
- Before using the product in this catalog, please read "Precautions" and other safety precautions listed in the printed version catalog.

LF Series Small Current Type

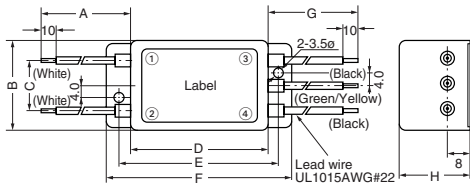
[RoHS Compliant]



| Model | Rated voltage AC/DC (V) | Rated current AC/DC (A) | Withstanding voltage 1 min., line to ground AC (V) | Insulation resistance 500VDC 1 min., line to ground (MΩ) min. | Leakage current 250V/60Hz, (mA) max. | Voltage drop 50Hz, (V) max. | Self-temperature rise (K) max. | Operating temperature range (°C) | Certified standard | Weight (g) |
|-----------|-------------------------|-------------------------|--|---|--------------------------------------|-----------------------------|--------------------------------|----------------------------------|--------------------|------------|
| LF-202A | 250 | 2 | 1500 | 300 | 1 | 1.5 | 30 | -20 to +55 | | 95 |
| LF-202U-1 | 250 | 2 | 1500 | 300 | 1 | 1.5 | 30 | -20 to +55 | UL | 95 |

Shape and Dimensions

●LF-202A, LF-202U-1

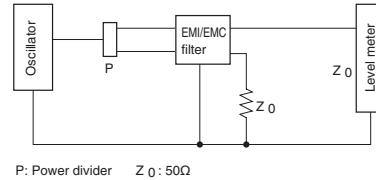


| Model | A | B | C | D | E | F | G | H |
|-----------|-----|----|----|----|----|----|-----|----|
| LF-202A | 100 | 32 | 17 | 48 | 56 | 64 | 100 | 25 |
| LF-202U-1 | 200 | 32 | 17 | 48 | 56 | 64 | 200 | 25 |

[mm]

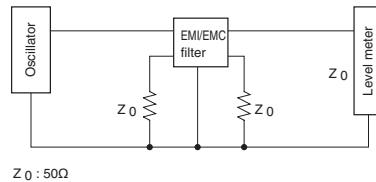
Measuring Circuit

●Common mode



P: Power divider Z₀: 50Ω

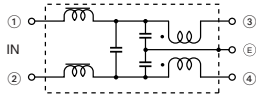
●Normal mode



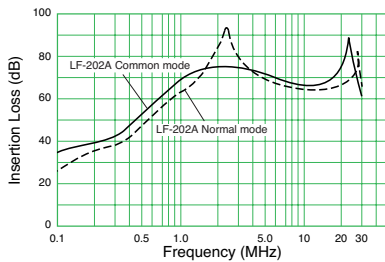
Z₀: 50Ω

Circuit Diagram

●LF-200 Series



Attenuation (Static Characteristics)



大豪电子

电话: 0775-83233025

<http://www.szdahao.com>

<http://www.very-tec.com>



- All specifications in this catalog and production status of products are subject to change without notice. Prior to the purchase, please contact NEC TOKIN for updated product data.
- Please request for a specification sheet for detailed product data prior to the purchase.
- Before using the product in this catalog, please read "Precautions" and other safety precautions listed in the printed version catalog.

LF Series Small Current Type with Screw Terminal

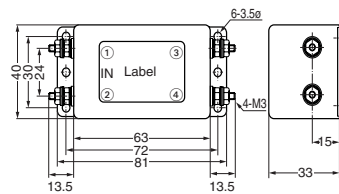
[RoHS Compliant]



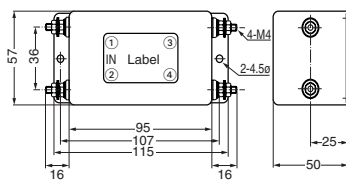
| Model | Rated voltage AC/DC (V) | Rated current AC/DC (A) | Withstanding voltage 1 min., line to ground AC (V) | Insulation resistance 500VDC 1 min., line to ground (MΩ) min. | Leakage current 250V/60Hz, (mA) max. | Voltage drop 50Hz, (V) max. | Self-temperature rise (K) max. | Operating temperature range (°C) | Certified standard | Weight (g) |
|---------|-------------------------|-------------------------|--|---|--------------------------------------|-----------------------------|--------------------------------|----------------------------------|--------------------|------------|
| LF-205A | 250 | 5 | 1500 | 300 | 1 | 1.5 | 30 | -20 to +55 | | 170 |
| LF-205P | 250 | 5 | 2000 | 300 | 1 | 1.5 | 30 | -20 to +55 | | 170 |
| LF-210 | 250 | 10 | 1500 | 300 | 1 | 1.5 | 30 | -20 to +55 | UL | 590 |
| LF-215 | 250 | 15 | 1500 | 300 | 1 | 1.5 | 30 | -20 to +55 | | 620 |
| LF-215U | 250 | 15 | 1500 | 300 | 1 | 1.5 | 30 | -20 to +55 | UL | 620 |
| LF-210N | 250 | 10 | 1500 | 300 | 1 | 1.5 | 30 | -20 to +55 | | 650 |
| LF-210P | 250 | 10 | 2000 | 300 | 1 | 1.5 | 30 | -20 to +55 | | 590 |
| LF-215N | 250 | 15 | 1500 | 300 | 1 | 1.5 | 30 | -20 to +55 | | 650 |
| LF-215P | 250 | 15 | 2000 | 300 | 1 | 1.5 | 30 | -20 to +55 | | 620 |

Shape and Dimensions

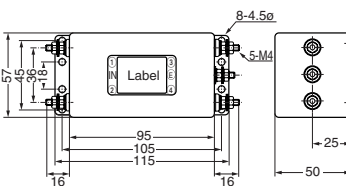
● LF-205A, LF-205P



● LF-215U



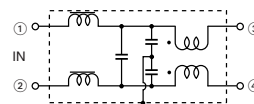
● LF-210, 210N, 210P, LF-215, 215N, 215P



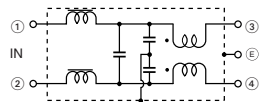
[mm]

Circuit Diagram

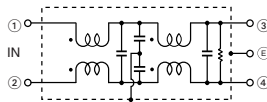
● LF-205A, 205P, 215U



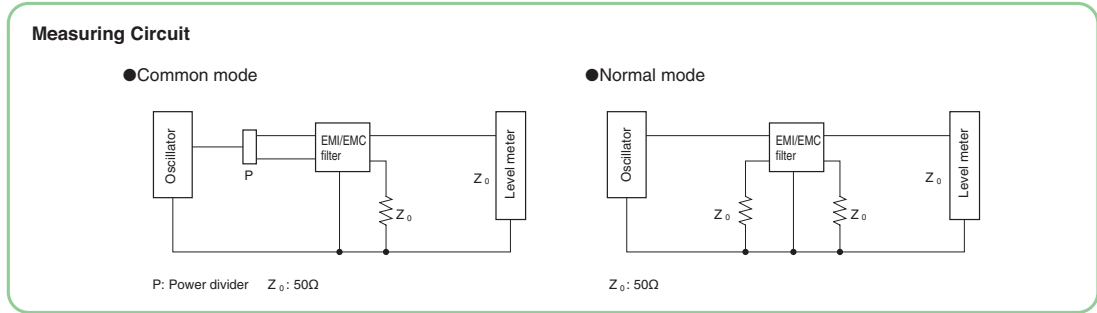
● LF-210, 215, 210P, 215P



● LF-210N, 215N



- All specifications in this catalog and production status of products are subject to change without notice. Prior to the purchase, please contact NEC TOKIN for updated product data.
- Please request for a specification sheet for detailed product data prior to the purchase.
- Before using the product in this catalog, please read "Precautions" and other safety precautions listed in the printed version catalog.

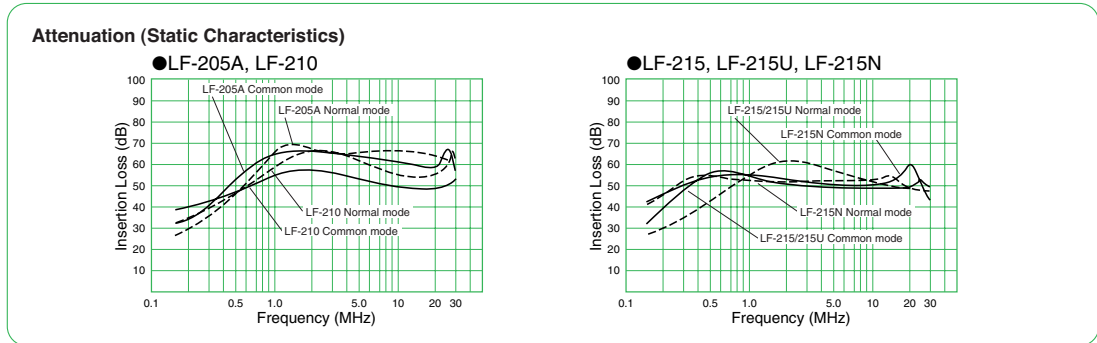


大豪电子

电话: 0775-83233025

http://www.szdahao.com

http://www.very-tec.com



- All specifications in this catalog and production status of products are subject to change without notice. Prior to the purchase, please contact NEC TOKIN for updated product data.
- Please request for a specification sheet for detailed product data prior to the purchase.
- Before using the product in this catalog, please read "Precautions" and other safety precautions listed in the printed version catalog.

LF Series

Screw Terminal Type

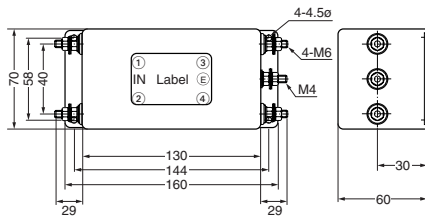
[RoHS Compliant]



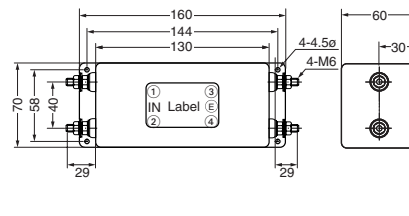
| Model | Rated voltage AC/DC (V) | Rated current AC/DC (A) | Withstanding voltage 1 min., line to ground AC (V) | Insulation resistance 500VDC 1 min., line to ground (MΩ) min. | Leakage current 250V/60Hz, (mA) max. | Voltage drop 50Hz, (V) max. | Self-temperature rise (K) max. | Operating temperature range (°C) | Certified standard | Weight (kg) |
|----------|-------------------------|-------------------------|--|---|--------------------------------------|-----------------------------|--------------------------------|----------------------------------|--------------------|-------------|
| LF-220 | 250 | 20 | 1500 | 300 | 1 | 1.5 | 30 | -20 to +55 | | 1.2 |
| LF-230 | 250 | 30 | 1500 | 300 | 1 | 1.5 | 30 | -20 to +55 | | 1.2 |
| LF-230FU | 250 | 30 | 1500 | 300 | 1 | 1.5 | 30 | -20 to +55 | UL | 1.2 |
| LF-220N | 250 | 20 | 1500 | 300 | 1 | 1.5 | 30 | -20 to +55 | | 1.2 |
| LF-220P | 250 | 20 | 2000 | 300 | 1 | 1.5 | 30 | -20 to +55 | | 1.2 |
| LF-230N | 250 | 30 | 1500 | 300 | 1 | 1.5 | 30 | -20 to +55 | | 1.2 |
| LF-230P | 250 | 30 | 2000 | 300 | 1 | 1.5 | 30 | -20 to +55 | | 1.2 |

Shape and Dimensions

●LF-220, 220N, 220P, LF-230, 230N, 230P



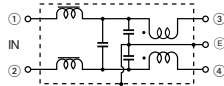
●LF-230FU



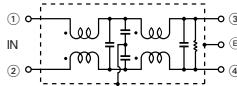
[mm]

Circuit Diagram

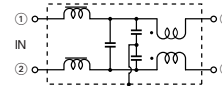
●LF-220, 220P, 230, 230P



●LF-220N, 230N Series

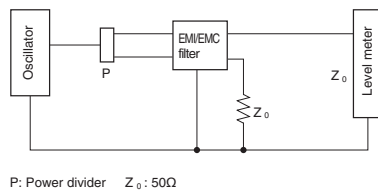


●LF-230FU



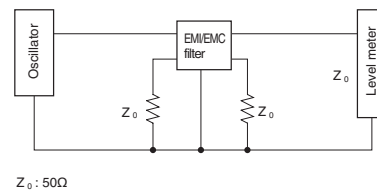
Measuring Circuit

●Common mode



P: Power divider Z_0 : 50Ω

●Normal mode

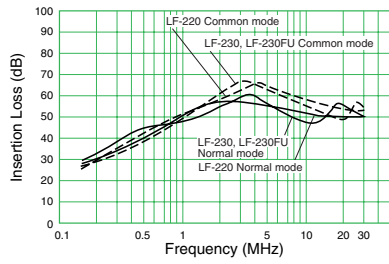


Z_0 : 50Ω



- All specifications in this catalog and production status of products are subject to change without notice. Prior to the purchase, please contact NEC TOKIN for updated product data.
- Please request for a specification sheet for detailed product data prior to the purchase.
- Before using the product in this catalog, please read "Precautions" and other safety precautions listed in the printed version catalog.

Attenuation (Static Characteristics)



大豪电子
 电话: 0775-83233025
<http://www.szdahao.com>
<http://www.very-tec.com>



- All specifications in this catalog and production status of products are subject to change without notice. Prior to the purchase, please contact NEC TOKIN for updated product data.
- Please request for a specification sheet for detailed product data prior to the purchase.
- Before using the product in this catalog, please read "Precautions" and other safety precautions listed in the printed version catalog.

LF Series

Large Current Type

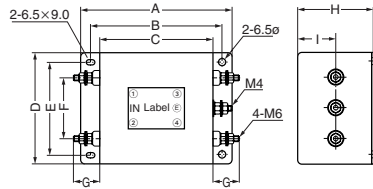
[RoHS Compliant]



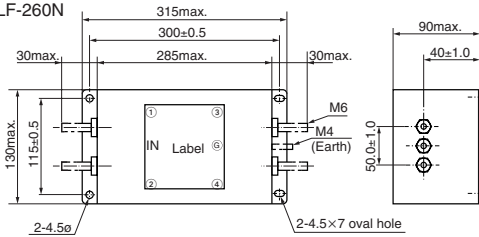
| Model | Rated voltage AC/DC (V) | Rated current AC/DC (A) | Withstanding voltage 1 min., line to ground AC (V) | Insulation resistance 500VDC 1 min., line to ground (MΩ) min. | Leakage current 250V/60Hz, (mA) max. | Voltage drop 50Hz, (V) max. | Self-temperature rise (K) max. | Operating temperature range (°C) | Certified standard | Weight (kg) |
|---------|-------------------------|-------------------------|--|---|--------------------------------------|-----------------------------|--------------------------------|----------------------------------|--------------------|-------------|
| LF-240 | 250 | 40 | 1500 | 300 | 1 | 1.5 | 40 | -20 to +45 | | 3.2 |
| LF-240P | 250 | 40 | 2000 | 300 | 1 | 1.5 | 40 | -20 to +45 | | 3.2 |
| LF-250 | 250 | 50 | 1500 | 300 | 1 | 1.5 | 40 | -20 to +45 | | 4.0 |
| LF-250P | 250 | 50 | 2000 | 300 | 1 | 1.5 | 40 | -20 to +45 | | 4.0 |
| LF-260N | 250 | 60 | 1500 | 300 | 1 | 1.5 | 30 | -20 to +55 | | 6.5 |
| LF-240U | 250 | 40 | 1500 | 300 | 1 | 1.5 | 40 | -20 to +45 | UL | 3.2 |

Shape and Dimensions

● LF-240/240P/240U, LF-250/250P



● LF-260N

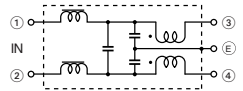


| Model | A | B | C | D | E | F | G | H | I |
|-------------|-----|-----|-----|-----|-----|----|----|----|----|
| LF-240/240P | 210 | 190 | 170 | 120 | 100 | 60 | 29 | 75 | 40 |
| LF-240U | 240 | 220 | 200 | 90 | 70 | 40 | 30 | 80 | 40 |
| LF-250/250P | 240 | 220 | 200 | 90 | 70 | 40 | 30 | 80 | 40 |
| LF-260N | 315 | 300 | 285 | 130 | 115 | 50 | 30 | 90 | 50 |

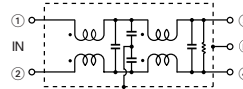
[mm]

Circuit Diagram

● LF-240, 240P, 240U, 250, 250P

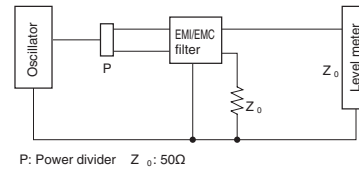


● LF-260N Series



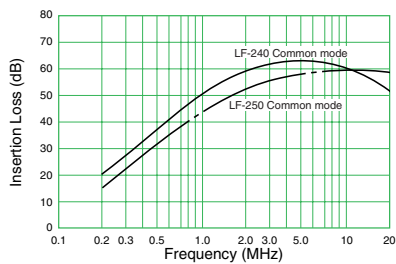
Measuring Circuit

Common mode



P: Power divider Z₀: 50Ω

Attenuation (Static Characteristics)



- All specifications in this catalog and production status of products are subject to change without notice. Prior to the purchase, please contact NEC TOKIN for updated product data.
- Please request for a specification sheet for detailed product data prior to the purchase.
- Before using the product in this catalog, please read "Precautions" and other safety precautions listed in the printed version catalog.

LF Series

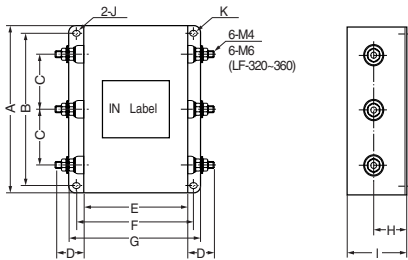
Three-Phase Type

[RoHS Compliant]



| Model | Rated voltage AC/DC (V) | Rated current AC/DC (A) | Withstanding voltage 1 min., line to ground AC (V) | Insulation resistance 500VDC 1 min., line to ground (MΩ) min. | Leakage current 250V/60Hz, (mA) max. | Voltage drop 50Hz, (V) max. | Self-temperature rise (K) max. | Operating temperature range (°C) | Certified standard | Weight (kg) |
|---------|-------------------------|-------------------------|--|---|--------------------------------------|-----------------------------|--------------------------------|----------------------------------|--------------------|-------------|
| LF-305 | 250 | 5 | 1500 | 300 | 1 | 1.5 | 30 | -20 to +55 | | 0.65 |
| LF-310 | 250 | 10 | 1500 | 300 | 1 | 1.5 | 30 | -20 to +55 | UL | 1.9 |
| LF-315 | 250 | 15 | 1500 | 300 | 1 | 1.5 | 30 | -20 to +55 | | 1.9 |
| LF-320 | 250 | 20 | 1500 | 300 | 1 | 1.5 | 30 | -20 to +55 | | 2.3 |
| LF-320U | 250 | 20 | 1500 | 300 | 1 | 1.5 | 30 | -20 to +60 | UL, CSA | 2.4 |
| LF-330 | 250 | 30 | 1500 | 300 | 1 | 1.5 | 30 | -20 to +55 | UL | 2.4 |
| LF-340 | 250 | 40 | 1500 | 300 | 1 | 1.5 | 40 | -20 to +45 | UL | 5.3 |
| LF-350 | 250 | 50 | 1500 | 300 | 1 | 1.5 | 40 | -20 to +45 | UL | 5.3 |
| LF-360 | 250 | 60 | 1500 | 300 | 1 | 1.5 | 40 | -20 to +45 | | 8.0 |
| LF-305A | 450 | 5 | 2000 | 300 | 2 | 1.5 | 40 | -20 to +45 | | 0.65 |
| LF-310A | 450 | 10 | 2000 | 300 | 2 | 1.5 | 40 | -20 to +45 | | 1.9 |
| LF-315A | 450 | 15 | 2000 | 300 | 2 | 1.5 | 40 | -20 to +45 | | 1.9 |
| LF-320A | 450 | 20 | 2000 | 300 | 2 | 1.5 | 40 | -20 to +45 | UL | 2.3 |
| LF-330A | 450 | 30 | 2000 | 300 | 2 | 1.5 | 40 | -20 to +45 | | 2.4 |
| LF-340A | 450 | 40 | 2000 | 300 | 2 | 1.5 | 40 | -20 to +45 | | 5.3 |
| LF-350A | 450 | 50 | 2000 | 300 | 2 | 1.5 | 40 | -20 to +45 | | 5.3 |

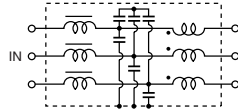
Shape and Dimensions



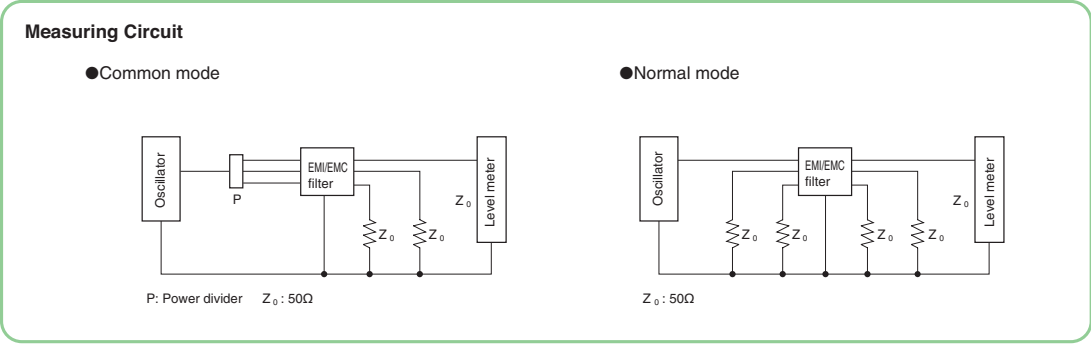
| Model | A | B | C | D | E | F | G | H | I | J | K |
|--------------|-----|-----|----|----|-----|-----|-----|----|-----|-------|------|
| LF-305, 305A | 120 | 110 | 40 | 25 | 80 | 95 | 110 | 25 | 45 | 4.5×7 | 4.5φ |
| LF-310, 310A | 180 | 170 | 60 | 25 | 120 | 135 | 150 | 35 | 65 | 4.5×7 | 4.5φ |
| LF-315, 315A | 180 | 170 | 60 | 25 | 120 | 135 | 150 | 35 | 65 | 4.5×7 | 4.5φ |
| LF-320, 320A | 180 | 170 | 60 | 29 | 120 | 135 | 150 | 35 | 65 | 4.5×7 | 4.5φ |
| LF-320U | 180 | 170 | 60 | 29 | 120 | 135 | 150 | 35 | 65 | 4.5×7 | 4.5φ |
| LF-330, 330A | 180 | 170 | 60 | 29 | 120 | 135 | 150 | 35 | 65 | 4.5×7 | 4.5φ |
| LF-340, 340A | 180 | 160 | 50 | 30 | 200 | 220 | 240 | 40 | 80 | 6.5×9 | 6.5φ |
| LF-350, 350A | 180 | 160 | 50 | 30 | 200 | 220 | 240 | 40 | 80 | 6.5×9 | 6.5φ |
| LF-360 | 200 | 180 | 60 | 30 | 300 | 320 | 340 | 50 | 100 | 6.5×9 | 6.5φ |

[mm]

Circuit Diagram



- All specifications in this catalog and production status of products are subject to change without notice. Prior to the purchase, please contact NEC TOKIN for updated product data.
- Please request for a specification sheet for detailed product data prior to the purchase.
- Before using the product in this catalog, please read "Precautions" and other safety precautions listed in the printed version catalog.

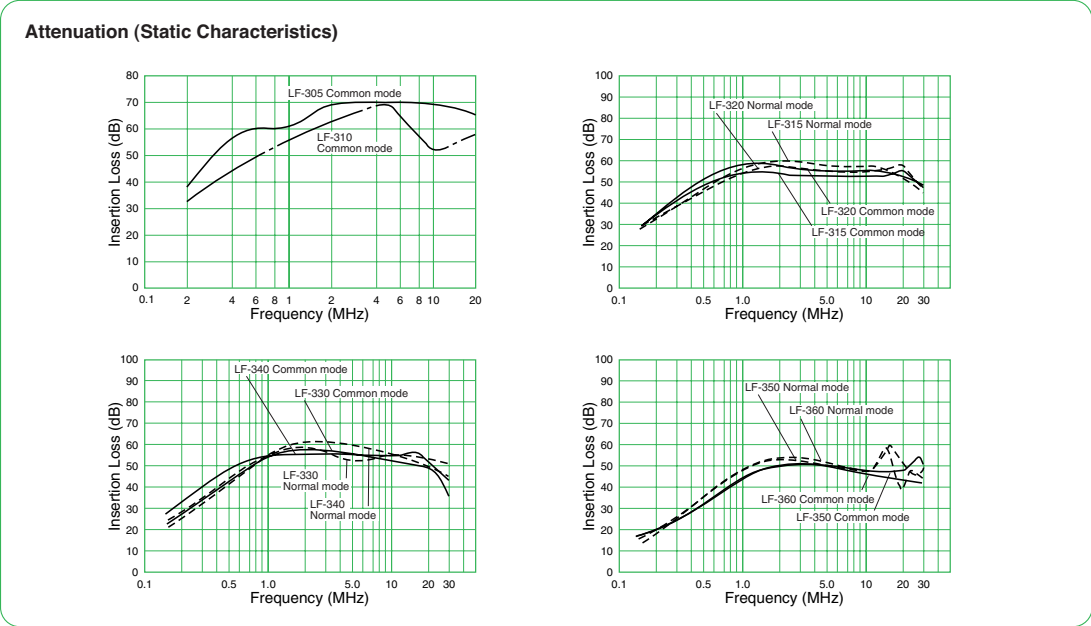


大豪电子

电话:0775-83233025

http://www.szdahao.com

http://www.very-tec.com



- All specifications in this catalog and production status of products are subject to change without notice. Prior to the purchase, please contact NEC TOKIN for updated product data.
- Please request for a specification sheet for detailed product data prior to the purchase.
- Before using the product in this catalog, please read "Precautions" and other safety precautions listed in the printed version catalog.

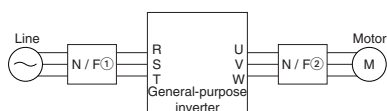
LF Series For Inverters

[RoHS Compliant]




| Model | Rated voltage AC/DC (V) | Rated current AC/DC (A) | Withstanding voltage 1 min., line to ground AC (V) | Insulation resistance 500VDC 1 min., line to ground (MΩ) min. | Leakage current 250V/60Hz, (mA) max. | Operating temperature range (°C) | Certified standard | Installation position |
|-----------|-------------------------|-------------------------|--|---|--------------------------------------|----------------------------------|--------------------|-----------------------|
| LF-305 | 250 | 5 | 1500 | 300 | 1 | -20 to +55 | | ① (input side) |
| LF-310 | 250 | 10 | 1500 | 300 | 1 | -20 to +55 | UL | ① (input side) |
| LF-315 | 250 | 15 | 1500 | 300 | 1 | -20 to +55 | | ① (input side) |
| LF-320 | 250 | 20 | 1500 | 300 | 1 | -20 to +55 | | ① (input side) |
| LF-330 | 250 | 30 | 1500 | 300 | 1 | -20 to +55 | UL | ① (input side) |
| LF-340 | 250 | 40 | 1500 | 300 | 1 | -20 to +45 | UL | ① (input side) |
| LF-350 | 250 | 50 | 1500 | 300 | 1 | -20 to +45 | UL | ① (input side) |
| LF-360 | 250 | 60 | 1500 | 300 | 1 | -20 to +45 | | ① (input side) |
| LF-305G | 250 | 5 | 1500 | 300 | 1 | -25 to +55 | | ① (input side) |
| LF-310G | 250 | 10 | 1500 | 300 | 1 | -25 to +55 | | ① (input side) |
| LF-320G | 250 | 20 | 1500 | 300 | 1 | -25 to +55 | | ① (input side) |
| LF-315K | 250 | 15 | 2000 | 300 | 5 | -25 to +55 | | ① (input side) |
| LF-325K | 250 | 25 | 2000 | 300 | 5 | -25 to +55 | | ① (input side) |
| LF-335K | 250 | 35 | 2000 | 300 | 5 | -25 to +55 | | ① (input side) |
| LF-380K | 250 | 80 | 2000 | 300 | 5 | -25 to +55 | | ① (input side) |
| LF-314K4 | 506 | 14 | 2500 | 300 | 10 (500V, 60Hz) | -25 to +55 | | ① (input side) |
| LF-330K4 | 506 | 30 | 2500 | 300 | 10 (500V, 60Hz) | -25 to +55 | | ① (input side) |
| LF-355K4 | 506 | 55 | 2500 | 300 | 10 (500V, 60Hz) | -25 to +55 | | ① (input side) |
| LF-380K4 | 506 | 80 | 2500 | 300 | 10 (500V, 60Hz) | -25 to +55 | | ① (input side) |
| LF-310KA | 250 | 10 | 2000 | 300 | — | -25 to +55 | | ② (output side) |
| LF-320KA | 250 | 20 | 2000 | 300 | — | -25 to +55 | | ② (output side) |
| LF-350KA | 250 | 50 | 2000 | 300 | — | -25 to +55 | | ② (output side) |
| LF-310KB | 440 | 10 | 2500 | 300 | — | -25 to +55 | | ② (output side) |
| LF-320KB | 440 | 20 | 2500 | 300 | — | -25 to +55 | | ② (output side) |
| LF-335KB | 440 | 35 | 2500 | 300 | — | -25 to +55 | | ② (output side) |
| LF-345KB | 440 | 45 | 2500 | 300 | — | -25 to +55 | | ② (output side) |
| LF-375KB | 440 | 75 | 2500 | 300 | — | -25 to +55 | | ② (output side) |
| LF-3110KB | 440 | 110 | 2500 | 300 | — | -25 to +55 | | ② (output side) |

Installation Diagram



- N/F ① LF-K Series (conforms to CISPR Pub 14)
LF Series (conforms to FCC P15-J and JTTC)
LF-G Series (conforms to FCC P15-J and JTTC)
- N/F ② LF-KA Series (200V line)
LF-KB Series (400V line)

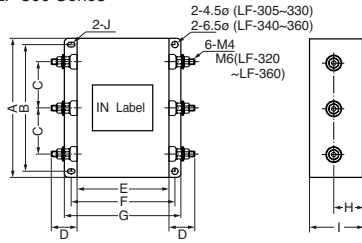
 Only LF-KA and KB can be used in N/F②.
Caution



- All specifications in this catalog and production status of products are subject to change without notice. Prior to the purchase, please contact NEC TOKIN for updated product data.
- Please request for a specification sheet for detailed product data prior to the purchase.
- Before using the product in this catalog, please read "Precautions" and other safety precautions listed in the printed version catalog.

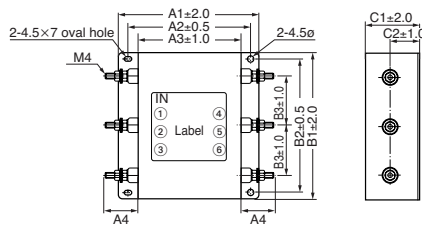
Shape and Dimensions

●LF-300 Series



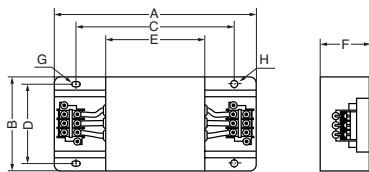
| Model | A | B | C | D | E | F | G | H | I | J |
|--------|-----|-----|----|----|-----|-----|-----|----|-----|-------|
| LF-305 | 120 | 110 | 40 | 25 | 80 | 95 | 110 | 25 | 45 | 4.5×7 |
| LF-310 | 180 | 170 | 60 | 25 | 120 | 135 | 150 | 35 | 65 | 4.5×7 |
| LF-315 | 180 | 170 | 60 | 25 | 120 | 135 | 150 | 35 | 65 | 4.5×7 |
| LF-320 | 180 | 170 | 60 | 29 | 120 | 135 | 150 | 35 | 65 | 4.5×7 |
| LF-330 | 180 | 170 | 60 | 29 | 120 | 135 | 150 | 35 | 65 | 4.5×7 |
| LF-340 | 180 | 160 | 50 | 30 | 200 | 220 | 240 | 40 | 80 | 6.5×9 |
| LF-350 | 180 | 160 | 50 | 35 | 200 | 220 | 240 | 40 | 80 | 6.5×9 |
| LF-360 | 200 | 180 | 60 | 30 | 300 | 320 | 340 | 40 | 100 | 6.5×9 |

●LF-G Series



| Model | A1 | A2 | A3 | A4 | B1 | B2 | B3 | C1 | C2 |
|---------|-----|-----|-----|----|-----|-----|----|----|----|
| LF-305G | 110 | 95 | 80 | 25 | 120 | 110 | 40 | 45 | 25 |
| LF-310G | 150 | 135 | 120 | 25 | 120 | 110 | 40 | 65 | 35 |
| LF-320G | 150 | 135 | 120 | 25 | 120 | 110 | 40 | 65 | 35 |

●LF-K Series

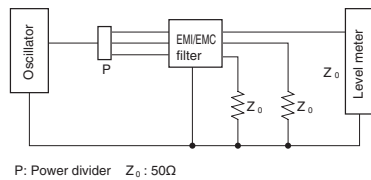


| Model | Terminal board | A | B | C | D | E | F | G | H |
|----------|----------------|-----|-----|-----|-----|-----|-----|--------|------|
| LF-315K | TE-K5.5 M4 | 260 | 180 | 180 | 160 | 120 | 65 | 7×4.5φ | 4.5φ |
| LF-325K | TE-K22 M6 | 340 | 180 | 260 | 160 | 200 | 80 | 9×6.5φ | 6.5φ |
| LF-335K | TE-K22 M6 | 440 | 200 | 360 | 180 | 300 | 100 | 9×6.5φ | 6.5φ |
| LF-380K | TE-K22 M6 | 670 | 400 | 560 | 380 | 500 | 170 | 9×6.5φ | 6.5φ |
| LF-314K4 | TE-K5.5 M4 | 260 | 180 | 180 | 160 | 120 | 65 | 7×4.5φ | 4.5φ |
| LF-330K4 | TE-K22 M6 | 440 | 200 | 360 | 180 | 300 | 100 | 9×6.5φ | 6.5φ |
| LF-355K4 | TE-K22 M6 | 540 | 300 | 470 | 270 | 400 | 130 | 9×6.5φ | 6.5φ |
| LF-380K4 | TE-K22 M6 | 672 | 400 | 560 | 380 | 500 | 170 | 9×6.5φ | 6.5φ |

| Model | Terminal board | A | B | C | D | E | F | G | H |
|-----------|----------------|-----|-----|-----|-----|-----|-----|--------|------|
| LF-310KA | TE-K5.5 M4 | 140 | 100 | 100 | 90 | 70 | 45 | 7×4.5φ | 4.5φ |
| LF-320KA | TE-K5.5 M4 | 140 | 100 | 100 | 90 | 70 | 45 | 7×4.5φ | 4.5φ |
| LF-350KA | TE-K22 M6 | 260 | 180 | 180 | 160 | 120 | 65 | 7×4.5φ | 4.5φ |
| LF-310KB | TE-K5.5 M4 | 140 | 100 | 100 | 90 | 70 | 45 | 7×4.5φ | 4.5φ |
| LF-320KB | TE-K5.5 M4 | 140 | 100 | 100 | 90 | 70 | 45 | 7×4.5φ | 4.5φ |
| LF-335KB | TE-K5.5 M4 | 140 | 100 | 100 | 90 | 70 | 45 | 7×4.5φ | 4.5φ |
| LF-345KB | TE-K22 M6 | 260 | 180 | 180 | 160 | 120 | 65 | 7×4.5φ | 4.5φ |
| LF-375KB | TE-K22 M6 | 540 | 320 | 480 | 300 | 340 | 240 | 9×6.5φ | 6.5φ |
| LF-3110KB | TE-K60 M8 | 540 | 320 | 480 | 300 | 340 | 240 | 9×6.5φ | 6.5φ |

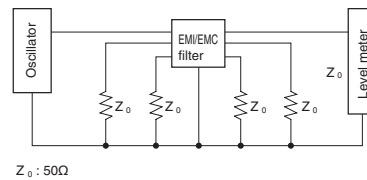
Measuring Circuit

●Common mode



P: Power divider Z₀: 50Ω

●Normal mode



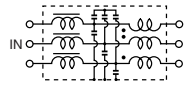
Z₀: 50Ω



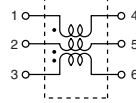
- All specifications in this catalog and production status of products are subject to change without notice. Prior to the purchase, please contact NEC TOKIN for updated product data.
- Please request for a specification sheet for detailed product data prior to the purchase.
- Before using the product in this catalog, please read "Precautions" and other safety precautions listed in the printed version catalog.

Circuit Diagram

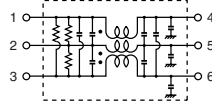
●LF-300 Series



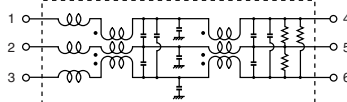
●KA, KB Series



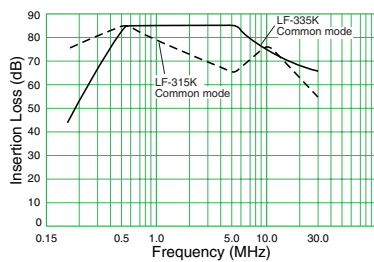
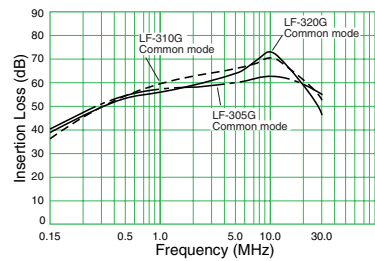
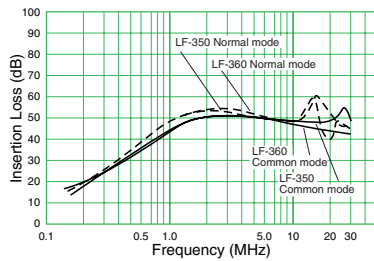
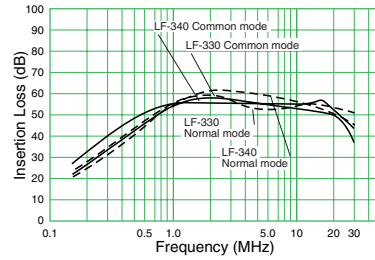
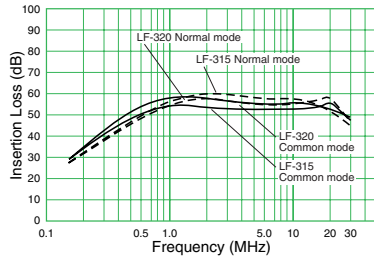
●LF-G Series



●K, K4 Series



Attenuation (Static Characteristics)



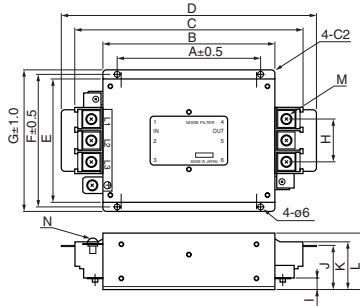
- All specifications in this catalog and production status of products are subject to change without notice. Prior to the purchase, please contact NEC TOKIN for updated product data.
- Please request for a specification sheet for detailed product data prior to the purchase.
- Before using the product in this catalog, please read "Precautions" and other safety precautions listed in the printed version catalog.

LF Series
Compliance with CE Marking
 (LF-3000 Series)
 [RoHS Compliant]



| Model | Rated voltage AC/DC (V) | Rated current AC/DC (A) | Withstanding voltage 1 min., line to ground AC (V) | Insulation resistance 500VDC 1 min., line to ground (MΩ) min. | Leakage current 250V/60Hz, (mA) max. | Voltage drop 50Hz, (V) max. | Self-temperature rise (K) max. | Operating temperature range (°C) | Certified standard |
|---------|-------------------------|-------------------------|--|---|--------------------------------------|-----------------------------|--------------------------------|----------------------------------|--------------------|
| LF-3200 | 250 | 20 | 2000 | 300 | 1.2 | 1.5 | 30 | -25 to +55 | TÜV |
| LF-3300 | 250 | 30 | 2000 | 300 | 1.2 | 1.5 | 30 | -25 to +55 | TÜV |
| LF-3400 | 250 | 40 | 2000 | 300 | 1.2 | 1.5 | 30 | -25 to +55 | TÜV |
| LF-3500 | 250 | 50 | 2000 | 300 | 1.2 | 1.5 | 30 | -25 to +55 | TÜV |
| LF-3600 | 250 | 60 | 2000 | 300 | 1.2 | 1.5 | 30 | -25 to +55 | TÜV |

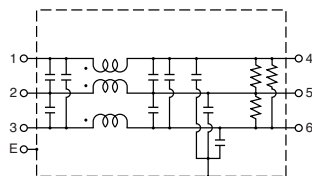
Shape and Dimensions



| Model | A | B | C | D | E | F | G | H | I | J | K | L | M | N |
|---------|-----|-----|-----|-----|-----|-----|-----|----|----|------|------|-----|----|----|
| LF-3200 | 150 | 180 | 219 | 247 | 90 | 100 | 110 | 32 | 17 | 45.5 | 47.5 | 60 | M5 | M5 |
| LF-3300 | 150 | 180 | 219 | 247 | 90 | 100 | 110 | 32 | 17 | 45.5 | 47.5 | 60 | M5 | M5 |
| LF-3400 | 150 | 180 | 237 | 264 | 129 | 139 | 149 | 46 | 24 | 58.5 | 63 | 75 | M6 | M6 |
| LF-3500 | 150 | 180 | 237 | 264 | 129 | 139 | 149 | 46 | 14 | 48.5 | 53 | 60 | M6 | M6 |
| LF-3600 | 300 | 330 | 387 | 414 | 180 | 200 | 220 | 46 | 55 | 89.5 | 94 | 115 | M6 | M6 |

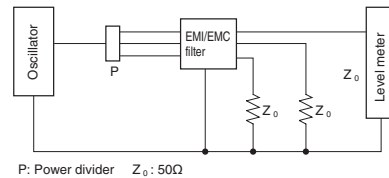
[mm]

Circuit Diagram



Measuring Circuit

●Common mode

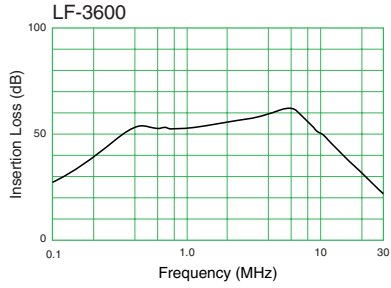
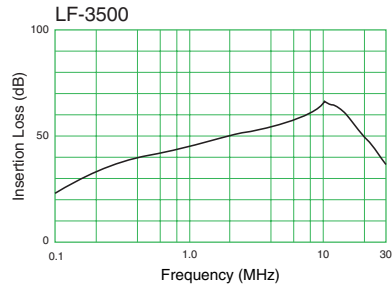
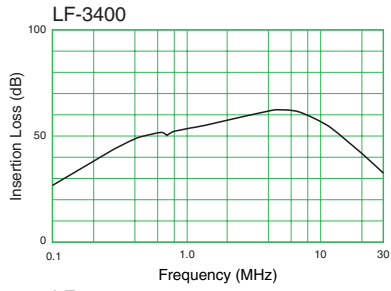
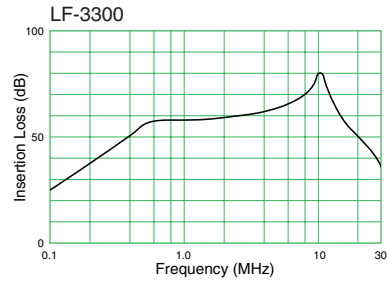
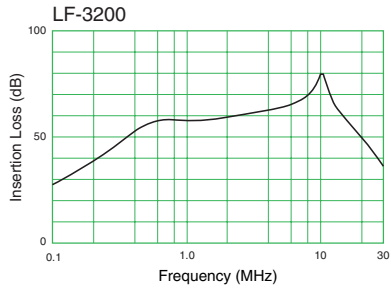


大豪电子
 电话: 0775-83233025
<http://www.szdahao.com>
<http://www.very-tec.com>



- All specifications in this catalog and production status of products are subject to change without notice. Prior to the purchase, please contact NEC TOKIN for updated product data.
- Please request for a specification sheet for detailed product data prior to the purchase.
- Before using the product in this catalog, please read "Precautions" and other safety precautions listed in the printed version catalog.

Attenuation (Static Characteristics)



- All specifications in this catalog and production status of products are subject to change without notice. Prior to the purchase, please contact NEC TOKIN for updated product data.
- Please request for a specification sheet for detailed product data prior to the purchase.
- Before using the product in this catalog, please read "Precautions" and other safety precautions listed in the printed version catalog.

LH Series

Low-Frequency Inverters

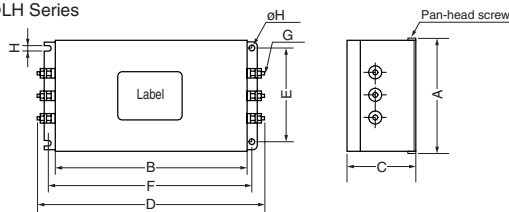
[RoHS Compliant]



| Model | Rated voltage AC/DC (V) | Rated current AC/DC (A) | Withstanding voltage 1 min., line to ground AC (V) | Insulation resistance 500VDC 1 min., line to ground (MΩ) min. | Leakage current 250V/60Hz, (mA) max. | Self-temperature rise (K) max. | Operating temperature range (°C) |
|---------|-------------------------|-------------------------|--|---|--------------------------------------|--------------------------------|----------------------------------|
| LH-3102 | 250 | 10 | 2000 | 300 | 1 | 40 | -20 to +45 |
| LH-3152 | 250 | 15 | 2000 | 300 | 1 | 40 | -20 to +45 |
| LH-3202 | 250 | 20 | 2000 | 300 | 1 | 40 | -20 to +45 |
| LH-3302 | 250 | 30 | 2000 | 300 | 1 | 40 | -20 to +45 |
| LH-3402 | 250 | 40 | 2000 | 300 | 1 | 40 | -20 to +45 |
| LH-3502 | 250 | 50 | 2000 | 300 | 1 | 40 | -20 to +45 |
| LH-3602 | 250 | 60 | 2000 | 300 | 1 | 40 | -20 to +45 |
| LH-3702 | 250 | 70 | 2000 | 300 | 1 | 40 | -20 to +45 |
| LH-3802 | 250 | 80 | 2000 | 300 | 1 | 40 | -20 to +45 |

Shape and Dimensions

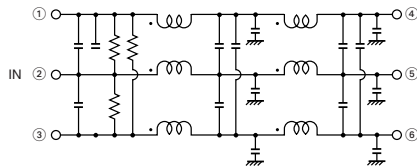
●LH Series



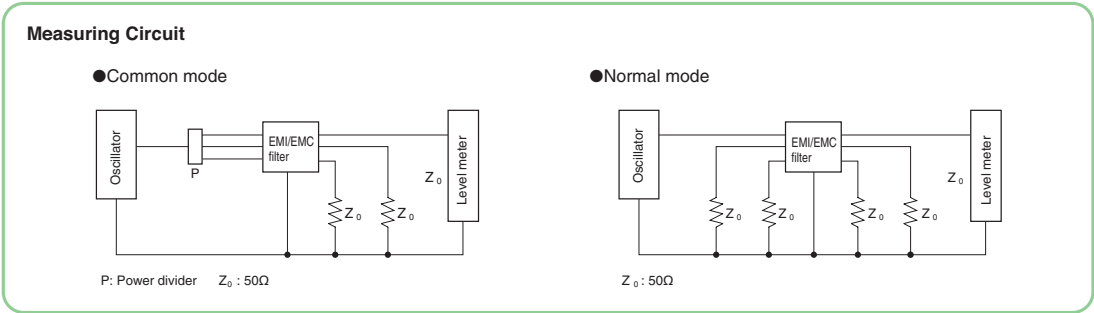
| Model | A | B | C | D | E | F | G | H |
|---------|-----|-----|-----|----------|-----|-----|----|-----|
| LH-3102 | 105 | 182 | 70 | 230 max. | 80 | 200 | M4 | 4.5 |
| LH-3152 | 105 | 182 | 70 | 230 max. | 80 | 200 | M4 | 4.5 |
| LH-3202 | 105 | 182 | 70 | 230 max. | 80 | 200 | M4 | 4.5 |
| LH-3302 | 115 | 203 | 85 | 250 max. | 75 | 220 | M6 | 5.5 |
| LH-3402 | 115 | 203 | 85 | 250 max. | 75 | 220 | M6 | 5.5 |
| LH-3502 | 190 | 300 | 125 | 355 max. | 150 | 320 | M6 | 5.5 |
| LH-3602 | 190 | 300 | 125 | 355 max. | 150 | 320 | M6 | 5.5 |
| LH-3702 | 190 | 335 | 155 | 430 max. | 150 | 360 | M8 | 5.5 |
| LH-3802 | 190 | 335 | 155 | 430 max. | 150 | 360 | M8 | 5.5 |

[mm]

Circuit Diagram



- All specifications in this catalog and production status of products are subject to change without notice. Prior to the purchase, please contact NEC TOKIN for updated product data.
- Please request for a specification sheet for detailed product data prior to the purchase.
- Before using the product in this catalog, please read "Precautions" and other safety precautions listed in the printed version catalog.

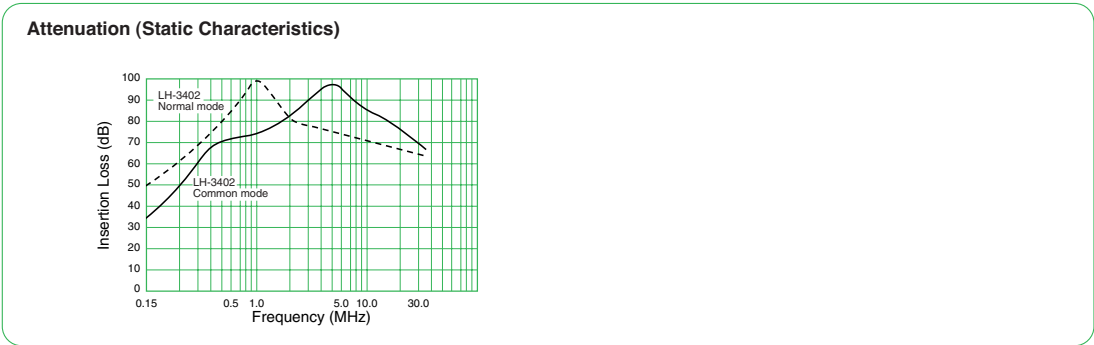


大豪电子

电话: 0775-83233025

http://www.szdahao.com

http://www.very-tec.com



- All specifications in this catalog and production status of products are subject to change without notice. Prior to the purchase, please contact NEC TOKIN for updated product data.
- Please request for a specification sheet for detailed product data prior to the purchase.
- Before using the product in this catalog, please read "Precautions" and other safety precautions listed in the printed version catalog.

LH Series

Compliance with CE Marking

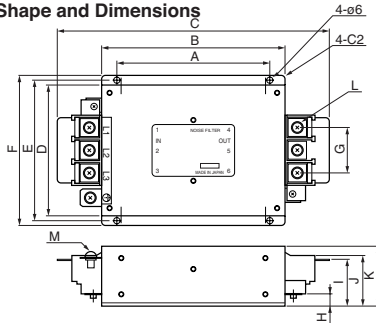


(LH-4 Series)
[RoHS Compliant]



| Model | Rated voltage AC/DC (V) | Rated current AC/DC (A) | Withstanding voltage 1 min., line to ground AC (V) | Insulation resistance 500VDC 1 min., line to ground (MΩ) min. | Leakage current 250V/60Hz, (mA) max. | Voltage drop 50Hz, (V) max. | Self-temperature rise (K) max. | Operating temperature range (°C) | Certified standard |
|----------|-------------------------|-------------------------|--|---|--------------------------------------|-----------------------------|--------------------------------|----------------------------------|--------------------|
| LH-3304 | 250 | 30 | 2000 | 300 | 1.2 | 1.5 | 30 | -25 to +55 | TÜV |
| LH-3404 | 250 | 40 | 2000 | 300 | 1.2 | 1.5 | 30 | -25 to +55 | TÜV |
| LH-3604 | 250 | 60 | 2000 | 300 | 1.2 | 1.5 | 30 | -25 to +55 | TÜV |
| LH-3804 | 250 | 80 | 2000 | 300 | 1.2 | 1.5 | 30 | -25 to +55 | TÜV |
| LH-31204 | 250 | 120 | 2000 | 300 | 1.2 | 1.5 | 30 | -25 to +55 | TÜV |
| LH-31504 | 250 | 150 | 2000 | 300 | 1.2 | 1.5 | 30 | -25 to +55 | TÜV |

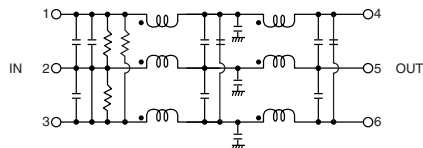
Shape and Dimensions



| Model | A | B | C | D | E | F | G | H | I | J | K | L | M |
|----------|-----|-----|-----|-----|-----|-----|----|----|------|------|-----|-----|-----|
| LH-3304 | 250 | 280 | 349 | 90 | 100 | 110 | 32 | 17 | 45.5 | 47.5 | 85 | M5 | M5 |
| LH-3404 | 250 | 280 | 366 | 129 | 139 | 149 | 46 | 23 | 58 | 62 | 85 | M6 | M6 |
| LH-3604 | 306 | 336 | 422 | 160 | 170 | 180 | 46 | 55 | 90 | 94 | 160 | M6 | M6 |
| LH-3804 | 450 | 480 | 600 | 210 | 230 | 250 | 56 | 60 | 103 | 107 | 170 | M8 | M8 |
| LH-31204 | 480 | 510 | 630 | 222 | 242 | 262 | 56 | 60 | 103 | 107 | 170 | M8 | M8 |
| LH-31504 | 630 | 660 | 788 | 250 | 270 | 290 | 76 | 70 | 126 | 130 | 200 | M10 | M10 |

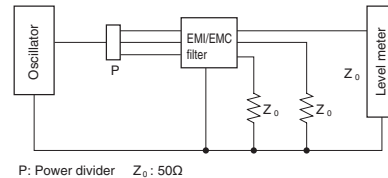
[mm]

Circuit Diagram

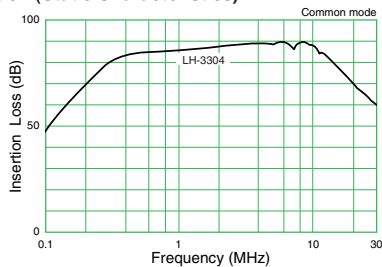


Measuring Circuit

● Common mode



Attenuation (Static Characteristics)



- All specifications in this catalog and production status of products are subject to change without notice. Prior to the purchase, please contact NEC TOKIN for updated product data.
- Please request for a specification sheet for detailed product data prior to the purchase.
- Before using the product in this catalog, please read "Precautions" and other safety precautions listed in the printed version catalog.

HFP Series

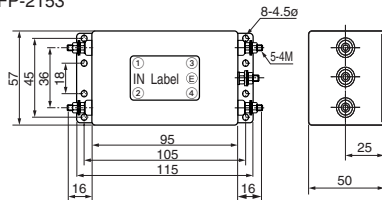
[RoHS Compliant]



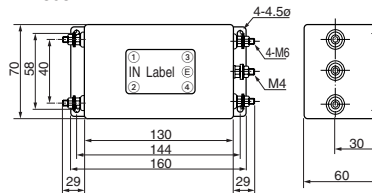
| Model | Rated voltage AC/DC (V) | Rated current AC/DC (A) | Withstanding voltage 1 min., line to ground (V) | Insulation resistance 500VDC 1 min., line to ground (MΩ) min. | Leakage current (mA) max. | Self-temperature rise (K) max. | Operating temperature range (°C) | Certified standard | Weight (kg) |
|------------|-------------------------|-------------------------|---|---|---------------------------|--------------------------------|----------------------------------|--------------------|-------------|
| HFP-2153 | 250 | 15 | AC1500 | 10 | 1.5 (250V, 60Hz) | 30 | -20 to +55 | UL,CSA,TÜV | 0.64 |
| HFP-2303 | 250 | 30 | AC1500 | 10 | 1.5 (250V, 60Hz) | 30 | -20 to +55 | UL,CSA,TÜV | 1.3 |
| HFP-2303A1 | 250 | 30 | AC1500 | 10 | 1.5 (250V, 60Hz) | 30 | -20 to +55 | UL,CSA,TÜV | 3.9 |
| HFP-4153A | 420 | 15 | DC2600 | 10 | 3.5 (420V, 60Hz) | 30 | -20 to +55 | UL,CSA,TÜV | 6.5 |
| HFP-4503A | 420 | 50 | DC2600 | 10 | 3.5 (420V, 60Hz) | 35 | -20 to +55 | UL,CSA,TÜV | 14.0 |

Shape and Dimensions

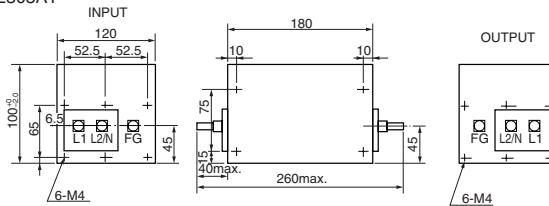
●HFP-2153



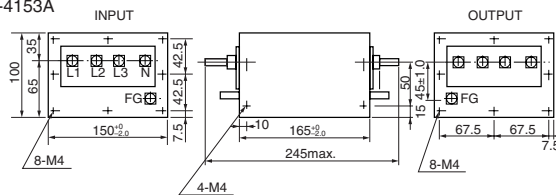
●HFP-2303



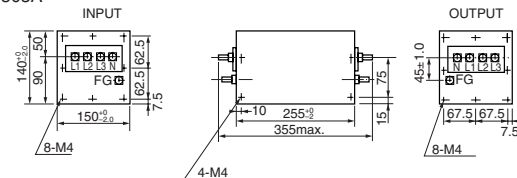
●HFP-2303A1



●HFP-4153A



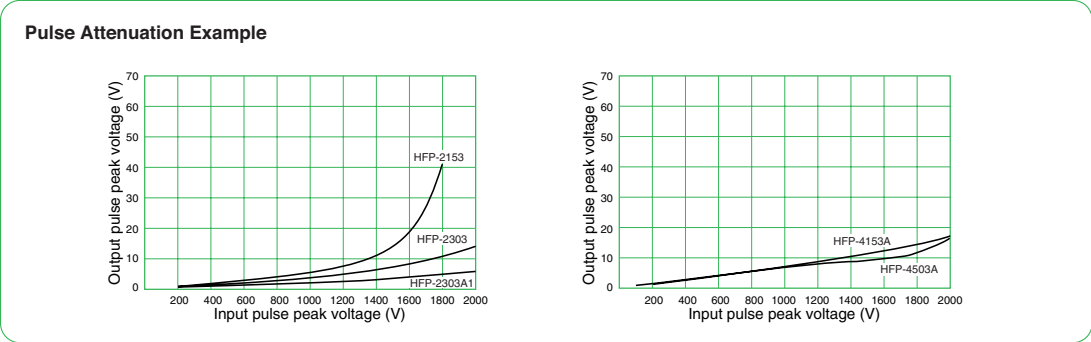
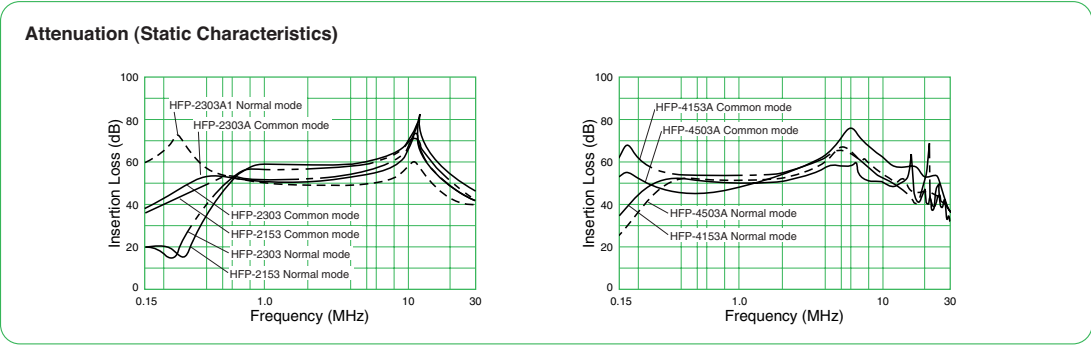
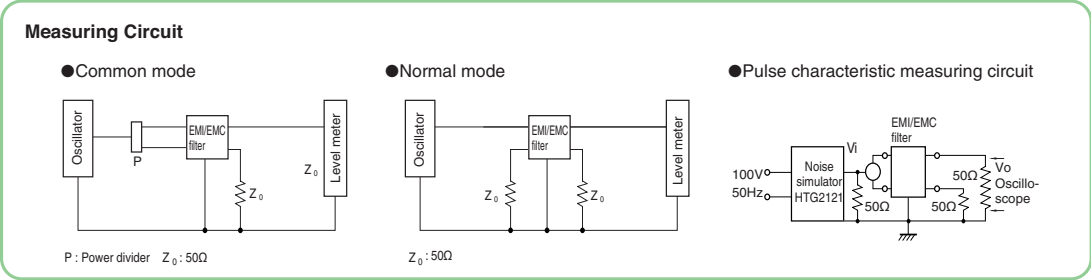
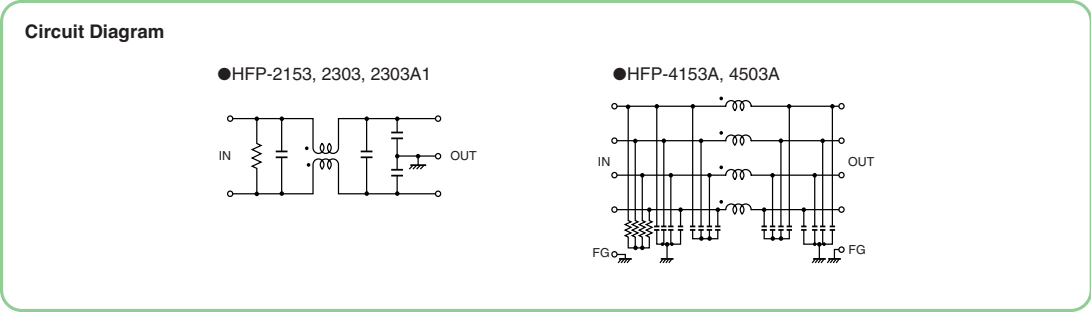
●HFP-4503A



[mm]



- All specifications in this catalog and production status of products are subject to change without notice. Prior to the purchase, please contact NEC TOKIN for updated product data.
- Please request for a specification sheet for detailed product data prior to the purchase.
- Before using the product in this catalog, please read "Precautions" and other safety precautions listed in the printed version catalog.



- All specifications in this catalog and production status of products are subject to change without notice. Prior to the purchase, please contact NEC TOKIN for updated product data.
- Please request for a specification sheet for detailed product data prior to the purchase.
- Before using the product in this catalog, please read "Precautions" and other safety precautions listed in the printed version catalog.

GT Series

Screw Terminal    

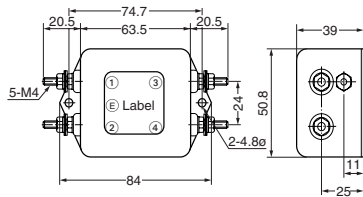
[RoHS Compliant]



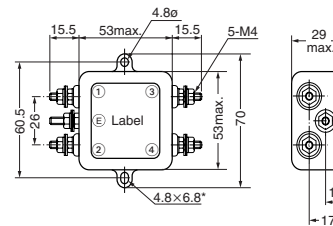
| Model | Rated voltage AC/DC (V) | Rated current AC/DC (A) | Withstanding voltage 1 min., line to ground AC (V) | Insulation resistance 500VDC 1 min., line to ground (MΩ) min. | Leakage current 250V/60Hz, (mA) max. | Voltage drop 50Hz, (V) max. | Self-temperature rise (K) max. | Operating temperature range (°C) | Certified standard | Weight (g) |
|----------|-------------------------|-------------------------|--|---|--------------------------------------|-----------------------------|--------------------------------|----------------------------------|--------------------|------------|
| GT-2050 | 250 | 5 | 1500 | 300 | 0.5 | 1 | 35 | -20 to +55 | | 150 |
| GT-2100 | 250 | 10 | 1500 | 300 | 0.5 | 1 | 35 | -20 to +55 | | 260 |
| GT-2150 | 250 | 15 | 1500 | 300 | 0.5 | 1 | 35 | -20 to +55 | | 270 |
| GT-2200 | 250 | 20 | 1500 | 300 | 0.5 | 1 | 35 | -20 to +55 | | 270 |
| GT-205U | 250 | 5 | 1500 | 300 | 0.5 | 1 | 35 | -20 to +55 | UL, TÜV, VDE, CSA | 170 |
| GT-210U | 250 | 10 | 1500 | 300 | 0.5 | 1 | 35 | -20 to +55 | UL, TÜV, VDE, CSA | 260 |
| GT-215U | 250 | 15 | 1500 | 300 | 0.5 | 1 | 35 | -20 to +55 | UL | 270 |
| GT-220U | 250 | 20 | 1500 | 300 | 0.5 | 1 | 35 | -20 to +55 | UL, TÜV | 270 |
| GT-2050R | 250 | 5 | 1500 | 300 | 0.5 | 1 | 35 | -20 to +55 | | 160 |
| GT-2100R | 250 | 10 | 1500 | 300 | 0.5 | 1 | 35 | -20 to +55 | | 270 |
| GT-2150R | 250 | 15 | 1500 | 300 | 0.5 | 1 | 35 | -20 to +55 | | 280 |
| GT-2200R | 250 | 20 | 1500 | 300 | 0.5 | 1 | 35 | -20 to +55 | | 285 |

Shape and Dimensions

●GT-2100, GT-210U, GT-2150, GT-215U, GT-2200
GT-220U, GT-2150R, GT-2100R, GT-2200R



●GT-2050, GT-205U, GT-2050R

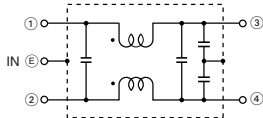


*ø4.8 for GT-205U

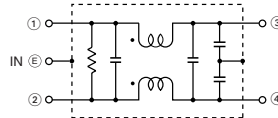
[mm]

Circuit Diagram

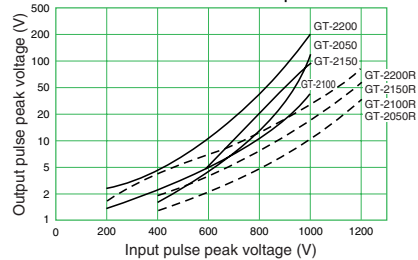
●GT-2000 Series
GT-2000R Series



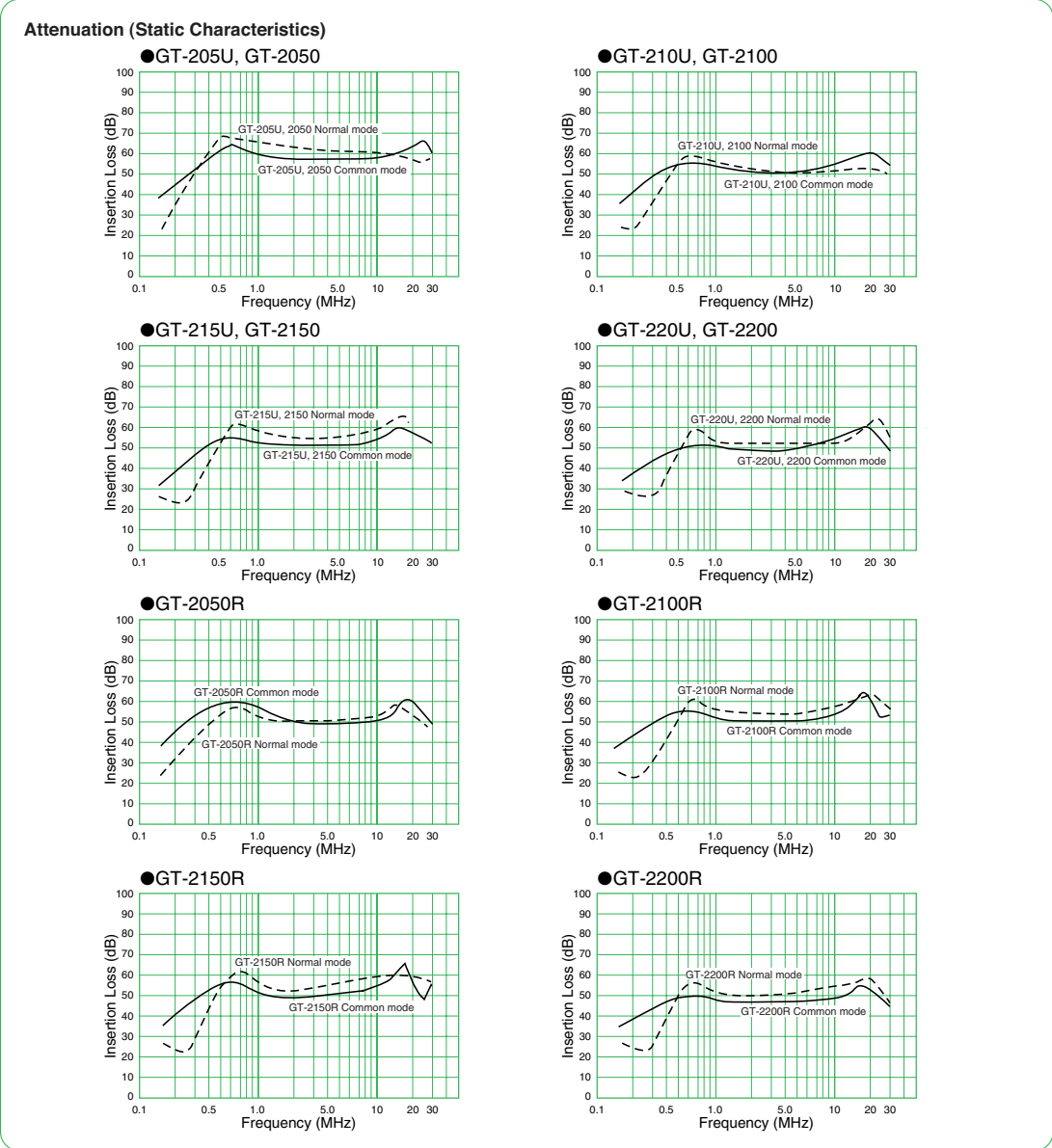
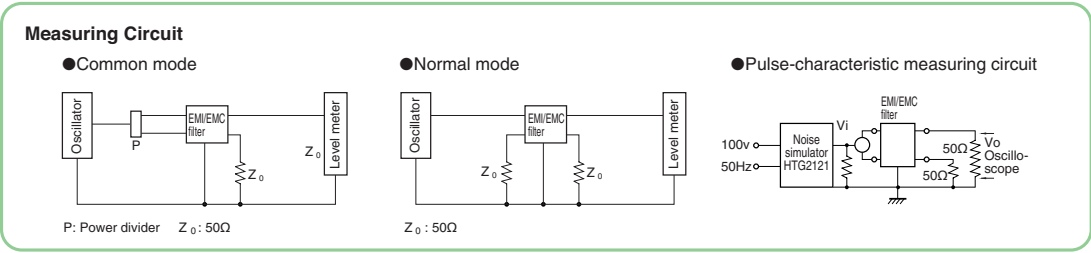
●GT-200U Series



●Pulse Attenuation Example



- All specifications in this catalog and production status of products are subject to change without notice. Prior to the purchase, please contact NEC TOKIN for updated product data.
- Please request for a specification sheet for detailed product data prior to the purchase.
- Before using the product in this catalog, please read "Precautions" and other safety precautions listed in the printed version catalog.



- All specifications in this catalog and production status of products are subject to change without notice. Prior to the purchase, please contact NEC TOKIN for updated product data.
- Please request for a specification sheet for detailed product data prior to the purchase.
- Before using the product in this catalog, please read "Precautions" and other safety precautions listed in the printed version catalog.

GT Series

Faston Terminal    

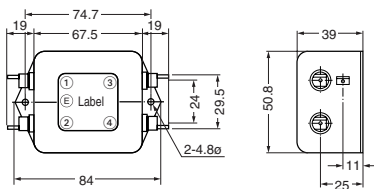
[RoHS Compliant]



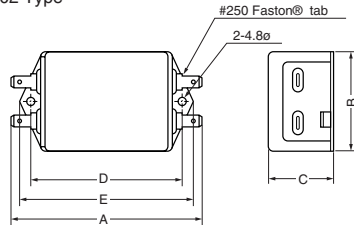
| Model | Rated voltage AC/DC (V) | Rated current AC/DC (A) | Withstanding voltage 1 min., line to ground AC (V) | Insulation resistance 500VDC 1 min., line to ground (MΩ) min. | Leakage current 250V/60Hz, (mA) max. | Voltage drop 50Hz, (V) max. | Self-temperature rise (K) max. | Operating temperature range (°C) | Certified standard | Weight (g) |
|----------|-------------------------|-------------------------|--|---|--------------------------------------|-----------------------------|--------------------------------|----------------------------------|--------------------|------------|
| GT-205J | 250 | 5 | 1500 | 300 | 0.5 | 1 | 35 | -20 to +55 | UL, CSA, TÜV, VDE | 135 |
| GT-210J | 250 | 10 | 1500 | 300 | 0.5 | 1 | 35 | -20 to +55 | UL, CSA, TÜV, VDE | 240 |
| GT-215J | 250 | 15 | 1500 | 300 | 0.5 | 1 | 35 | -20 to +50 | UL, CSA, TÜV, VDE | 255 |
| GT-20301 | 250 | 3 | 1500 | 300 | 1.0 | 1 | 35 | -20 to +50 | UL, CSA, TÜV | 160 |
| GT-20601 | 250 | 6 | 1500 | 300 | 1.0 | 1 | 35 | -20 to +55 | UL, CSA, TÜV | 190 |
| GT-21001 | 250 | 10 | 1500 | 300 | 1.0 | 1 | 35 | -20 to +55 | UL, CSA, TÜV | 300 |
| GT-20302 | 250 | 3 | 1500 | 300 | 1.0 | 1 | 35 | -20 to +55 | UL, CSA, TÜV | 215 |

Shape and Dimensions

●GT-210J, GT-215J

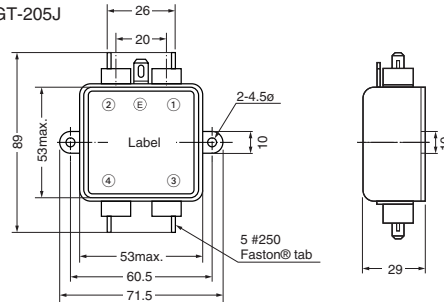


●GT-01, 02 Type



*Faston® is a registered trademark of Tyco Electronics AMP.

●GT-205J

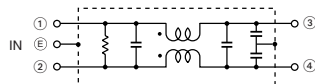


| Model | A | B | C | D | E |
|----------|-------|------|------|------|------|
| GT-20301 | 91.5 | 52.0 | 30.0 | 74.7 | 84.3 |
| GT-20601 | 105.7 | 57.5 | 32.0 | 87.1 | 96.5 |
| GT-21001 | 105.7 | 57.5 | 44.5 | 87.1 | 96.5 |
| GT-20302 | 91.5 | 52.0 | 45.0 | 74.7 | 84.3 |

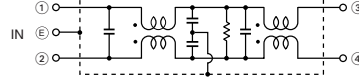
[mm]

Circuit Diagram

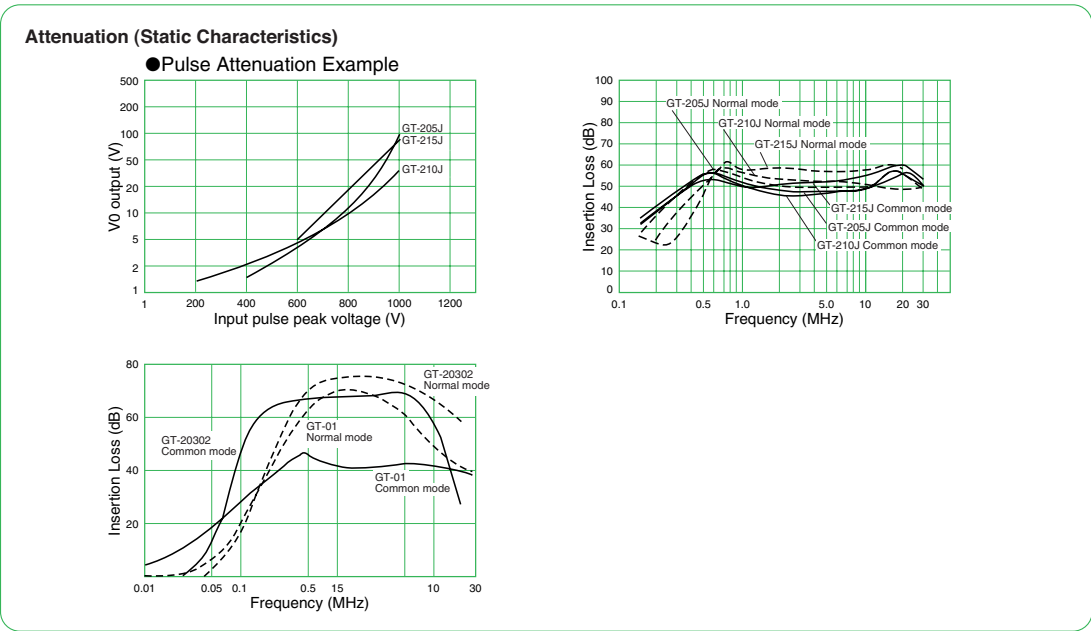
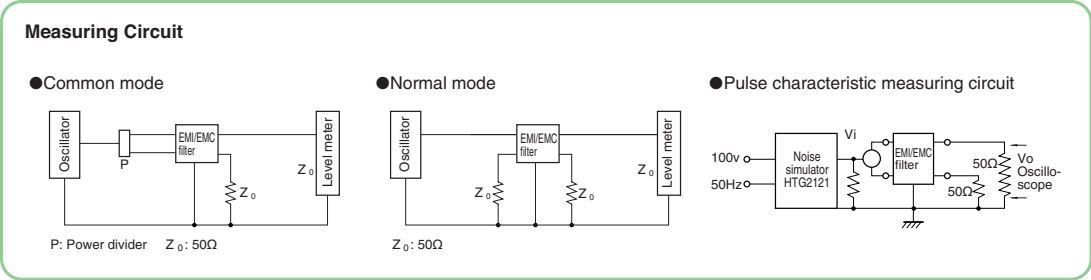
●GT-J, 01 Type



●GT-02 Type



- All specifications in this catalog and production status of products are subject to change without notice. Prior to the purchase, please contact NEC TOKIN for updated product data.
- Please request for a specification sheet for detailed product data prior to the purchase.
- Before using the product in this catalog, please read "Precautions" and other safety precautions listed in the printed version catalog.



大豪电子

电话: 0775-83233025

<http://www.szdahao.com>

<http://www.very-tec.com>



- All specifications in this catalog and production status of products are subject to change without notice. Prior to the purchase, please contact NEC TOKIN for updated product data.
- Please request for a specification sheet for detailed product data prior to the purchase.
- Before using the product in this catalog, please read "Precautions" and other safety precautions listed in the printed version catalog.

GT Series

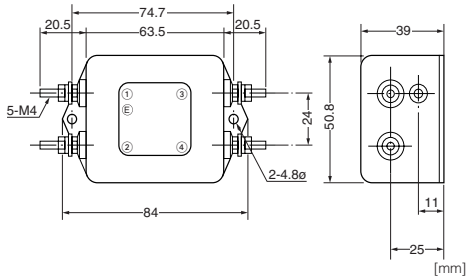
For VCCI   

[RoHS Compliant]

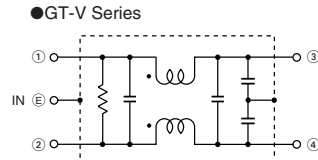


| Model | Rated voltage AC/DC (V) | Rated current AC/DC (A) | Withstanding voltage 1 min., line to ground AC (V) | Insulation resistance 500VDC 1 min., line to ground (MΩ) min. | Leakage current 250V/60Hz, (mA) max. | Voltage drop 50Hz, (V) max. | Self-temperature rise (K) max. | Operating temperature range (°C) | Certified standard | Weight (kg) |
|-----------|-------------------------|-------------------------|--|---|--------------------------------------|-----------------------------|--------------------------------|----------------------------------|--------------------|-------------|
| GT-20501V | 250 | 5 | 1500 | 300 | 0.5 | 1 | 35 | -20 to +55 | | 220 |
| GT-21001V | 250 | 10 | 1500 | 300 | 0.5 | 1 | 35 | -20 to +55 | UL, CSA, TÜV | 280 |
| GT-22001V | 250 | 20 | 1500 | 300 | 0.5 | 1 | 35 | -20 to +55 | | 285 |

Shape and Dimensions

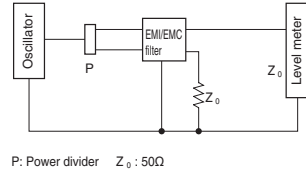


Circuit Diagram

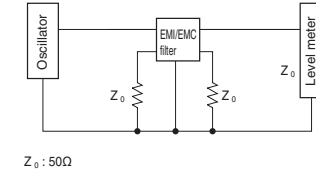


Measuring Circuit

● Common mode

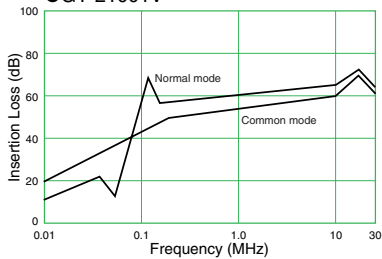


● Normal mode



Attenuation (Static Characteristics)

● GT-21001V



- All specifications in this catalog and production status of products are subject to change without notice. Prior to the purchase, please contact NEC TOKIN for updated product data.
- Please request for a specification sheet for detailed product data prior to the purchase.
- Before using the product in this catalog, please read "Precautions" and other safety precautions listed in the printed version catalog.

GF Series

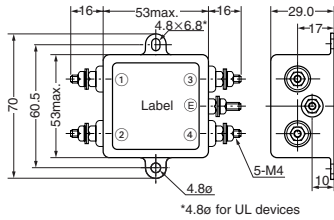
[RoHS Compliant]



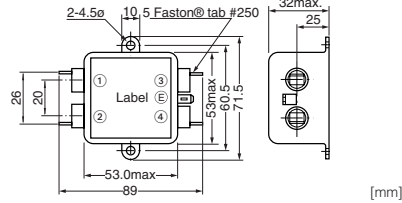
| Model | Rated voltage AC/DC (V) | Rated current AC/DC (A) | Withstanding voltage 1 min., line to ground AC (V) | Insulation resistance 500VDC 1 min., line to ground (MΩ) min. | Leakage current 250V/60Hz, (mA) max. | Voltage drop 50Hz, (V) max. | Self-temperature rise (K) max. | Operating temperature range (°C) | Certified standard | Weight (g) |
|---------|-------------------------|-------------------------|--|---|--------------------------------------|-----------------------------|--------------------------------|----------------------------------|--------------------|------------|
| GF-2050 | 250 | 5 | 1500 | 300 | 1 | 1.5 | 30 | -20 to +60 | | 130 |
| GF-205U | 250 | 5 | 1500 | 300 | 1 | 1.5 | 30 | -20 to +60 | UL | 130 |
| GF-2100 | 250 | 10 | 1500 | 300 | 1 | 1.5 | 30 | -20 to +60 | | 140 |
| GF-210U | 250 | 10 | 1500 | 300 | 1 | 1.5 | 30 | -20 to +60 | UL | 140 |
| GF-2150 | 250 | 15 | 1500 | 300 | 1 | 1.5 | 30 | -20 to +60 | | 140 |
| GF-2200 | 250 | 20 | 1500 | 300 | 1 | 1.5 | 30 | -20 to +60 | | 150 |
| GF-220U | 250 | 20 | 1500 | 300 | 1 | 1.5 | 30 | -20 to +60 | UL | 150 |
| GF-205E | 250 | 5 | 1500 | 300 | 1 | 1.5 | 30 | -20 to +55 | UL, CSA | 130 |

Shape and Dimensions

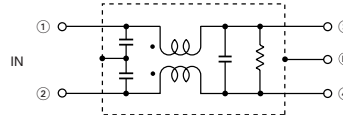
●GE Series (Except Type E)



●GF-E Type

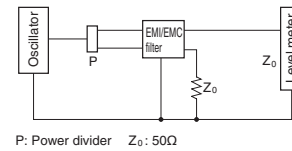


Circuit Diagram

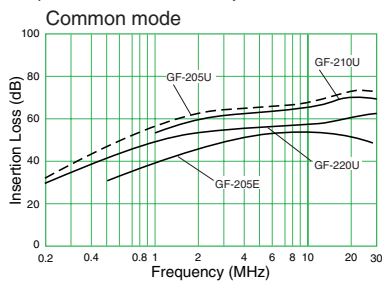


Measuring Circuit

●Common mode



Attenuation (Static Characteristics)



- All specifications in this catalog and production status of products are subject to change without notice. Prior to the purchase, please contact NEC TOKIN for updated product data.
- Please request for a specification sheet for detailed product data prior to the purchase.
- Before using the product in this catalog, please read "Precautions" and other safety precautions listed in the printed version catalog.

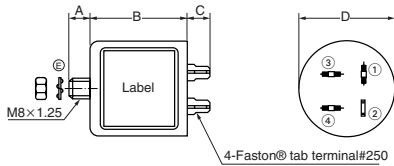
VU Series 
[RoHS Compliant]



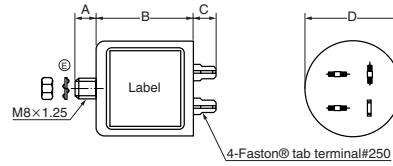
| Model | Rated voltage AC/DC (V) | Rated current AC/DC (A) | Withstanding voltage 1 min., line to ground AC (V) | Insulation resistance 500VDC 1 min., line to ground (MΩ) min. | Leakage current 250V/60Hz, (mA) max. | Voltage drop 50Hz, (V) max. | Self-temperature rise (K) max. | Operating temperature range (°C) | Certified standard | Weight (g) |
|----------|-------------------------|-------------------------|--|---|--------------------------------------|-----------------------------|--------------------------------|----------------------------------|--------------------|------------|
| VU-210FA | 250 | 10 | 1500 | 300 | 1 | 1.5 | 40 | -25 to +55 | UL, CSA | 130 |
| VU-215F | 250 | 15 | 1500 | 300 | 1 | 1.5 | 40 | -25 to +55 | UL, CSA | 130 |
| VU-215F3 | 250 | 15 | 1500 | 300 | 1 | 1.5 | 40 | -25 to +55 | UL, CSA | 105 |
| VU-215FE | 250 | 15 | 1500 | 300 | 1 | 1.5 | 40 | -25 to +55 | UL, CSA | 130 |
| VU-220F | 250 | 20 | 1500 | 300 | 1 | 1.5 | 40 | -25 to +55 | UL, CSA, TÜV | 240 |

Shape and Dimensions

●VU-215F, VU-215F3, VU-220F, 210FA



●VU-215FE



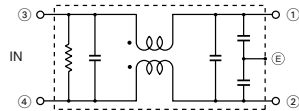
*Faston® is a registered trademark of Tyco Electronics AMP.

| Model | A | B | C | D |
|----------------|----|----|----|----|
| VU-215F | 12 | 50 | 12 | 38 |
| VU-215F3 | 12 | 40 | 13 | 45 |
| VU-215FE | 12 | 50 | 12 | 38 |
| VU-220F, 210FA | 12 | 50 | 12 | 50 |

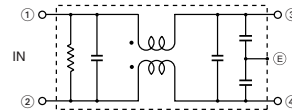
[mm]

Circuit Diagram

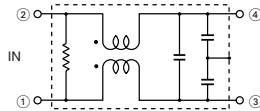
●VU-210FA, 215F, 220F



●VU-215FE



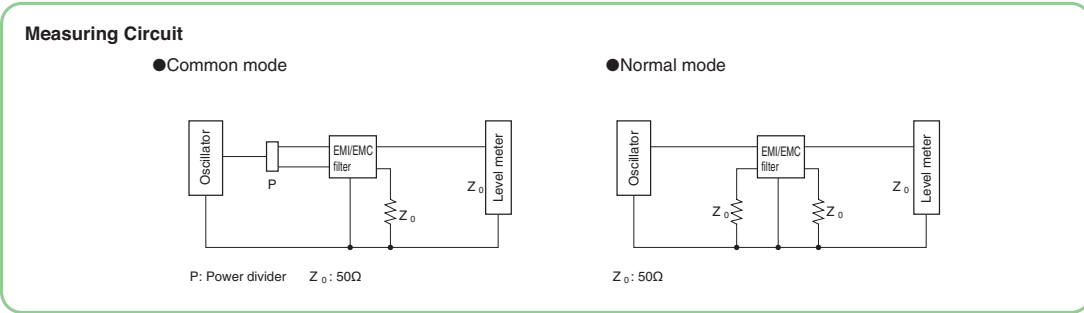
●VU-215F3



Caution: (E) represents a screw installation portion (M8).



- All specifications in this catalog and production status of products are subject to change without notice. Prior to the purchase, please contact NEC TOKIN for updated product data.
- Please request for a specification sheet for detailed product data prior to the purchase.
- Before using the product in this catalog, please read "Precautions" and other safety precautions listed in the printed version catalog.

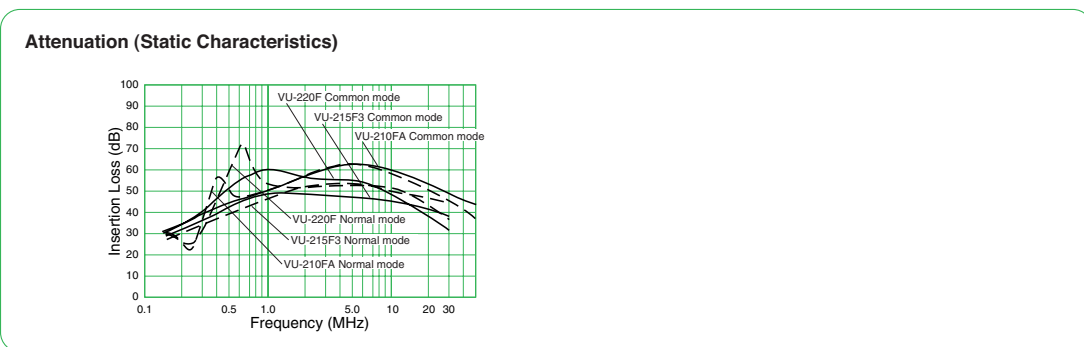


大豪电子


电话: 0775-83233025

http://www.szdahao.com

http://www.very-tec.com



- All specifications in this catalog and production status of products are subject to change without notice. Prior to the purchase, please contact NEC TOKIN for updated product data.
- Please request for a specification sheet for detailed product data prior to the purchase.
- Before using the product in this catalog, please read "Precautions" and other safety precautions listed in the printed version catalog.

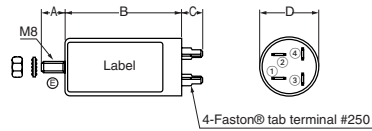
VC Series 
[RoHS Compliant]



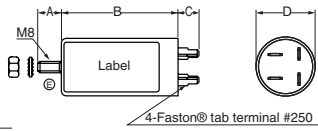
| Model | Rated voltage AC/DC (V) | Rated current AC/DC (A) | Withstanding voltage 1 min., line to ground AC (V) | Insulation resistance 500VDC 1 min., line to ground (MΩ) min. | Leakage current 250V/60Hz, 50Hz, (mA) max. | Voltage drop 50Hz, (V) max. | Self-temperature rise (K) max. | Operating temperature range (°C) | Certified standard | Weight (g) |
|-----------|-------------------------|-------------------------|--|---|--|-----------------------------|--------------------------------|----------------------------------|--------------------|------------|
| VC-210FA | 250 | 10 | 1500 | 300 | 1.5 | 1 | 40 | -20 to +55 | VDE | 130 |
| VC-215F3V | 250 | 15 | 1500 | 300 | 1.5 | 1 | 40 | -20 to +55 | TÜV | 110 |

Shape and Dimensions

●VC-210FA



●VC-215F3V

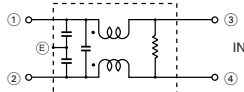


| Model | A | B | C | D |
|-----------|----|----|----|----|
| VC-210FA | 12 | 70 | 12 | 38 |
| VC-215F3V | 12 | 60 | 12 | 38 |

*Faston® is a registered trademark of Tyco Electronics AMP. [mm]

Circuit Diagram

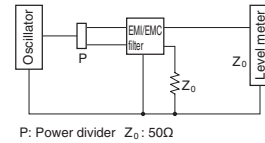
●VC Series



Caution: (E) represents a case.

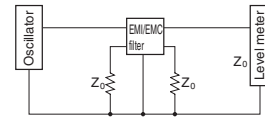
Measuring Circuit

●Common mode



P: Power divider $Z_0: 50\Omega$

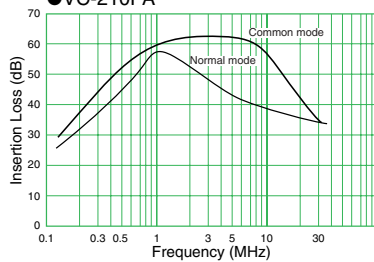
●Normal mode



$Z_0: 50\Omega$

Attenuation (Static Characteristics)

●VC-210FA



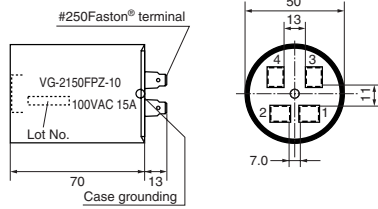
- All specifications in this catalog and production status of products are subject to change without notice. Prior to the purchase, please contact NEC TOKIN for updated product data.
- Please request for a specification sheet for detailed product data prior to the purchase.
- Before using the product in this catalog, please read "Precautions" and other safety precautions listed in the printed version catalog.

VG-FPZ Series for inverter installed home appliances' surge control [RoHS Compliant]



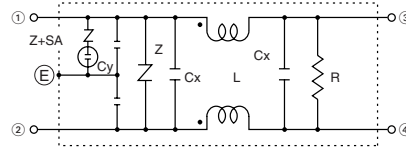
| Model | Rated voltage AC/DC (V) | Rated current AC/DC (A) | Withstanding voltage 1 min., line to ground AC (V) | Insulation resistance 500VDC 1 min., line to ground (MΩ) min. | Leakage current 250V/60Hz, (mA) max. | Operating temperature range (°C) | Weight (g) |
|---------------|-------------------------|-------------------------|--|---|--------------------------------------|----------------------------------|------------|
| VG-2150FPZ-10 | 100 | 15 | 1000 | 300 | 0.5 (125V) | -25 to +55 | 200 |
| VG-2150FPZ-20 | 200 | 15 | 1500 | 300 | 1.0 (250V) | -25 to +55 | 200 |
| VG-2200FPZ-10 | 100 | 20 | 1000 | 300 | 0.5 (125V) | -25 to +55 | 220 |

Shape and Dimensions



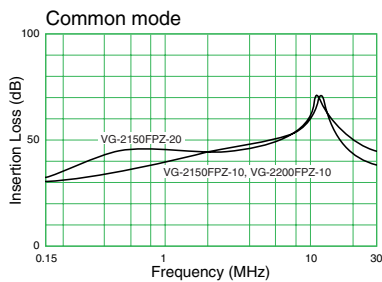
*Faston® is a registered trademark of Tyco Electronics AMP. [mm]

Circuit Diagram



Caution: (E) represents a case.

Attenuation Characteristics



- All specifications in this catalog and production status of products are subject to change without notice. Prior to the purchase, please contact NEC TOKIN for updated product data.
- Please request for a specification sheet for detailed product data prior to the purchase.
- Before using the product in this catalog, please read "Precautions" and other safety precautions listed in the printed version catalog.

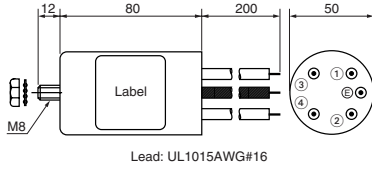
RG Series 
[RoHS Compliant]



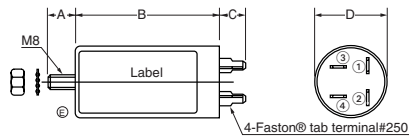
| Model | Rated voltage AC/DC (V) | Rated current AC/DC (A) | Withstanding voltage 1 min., line to ground AC (V) | Insulation resistance 500VDC 1 min., line to ground (MΩ) min. | Leakage current 250V/60Hz, (mA) max. | Voltage drop 50Hz, (V) max. | Self-temperature rise (K) max. | Operating temperature range (°C) | Certified standard | Weight (g) |
|------------------|-------------------------|-------------------------|--|---|--------------------------------------|-----------------------------|--------------------------------|----------------------------------|--------------------|------------|
| RG-208F | 250 | 8 | 1500 | 100 | 1 | 2 | 55 | -20 to +50 | TÜV | 320 |
| RG-208F1 | 250 | 8 | 1500 | 100 | 1 | 2 | 55 | -20 to +50 | UL, TÜV | 320 |
| RG-208F2 | 250 | 8 | 1500 | 100 | 1 | 2 | 55 | -20 to +50 | UL, TÜV | 220 |
| RG-208V-A | 250 | 8 | 1500 | 100 | 1 | 2 | 55 | -20 to +50 | TÜV | 370 |

Shape and Dimensions

●RG-208V-A



●RG-208F, 208F1, 208F2



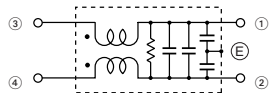
*Faston® is a registered trademark of Tyco Electronics AMP.

| Model | A | B | C | D |
|-------------------|----|----|----|----|
| RG-208F/F1 | 12 | 90 | 13 | 50 |
| RG-208F2 | 12 | 60 | 13 | 50 |

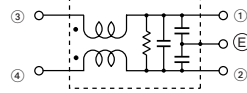
[mm]

Circuit Diagram

●RG-208F2



●RG-208F, 208F1, 208V-A



Caution: (E) represents a screw installation portion (M8) in modelRG-208F.

大豪电子

电话: 0775-83233025

<http://www.szdahao.com>

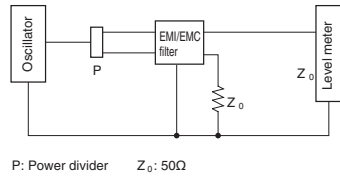
<http://www.very-tec.com>



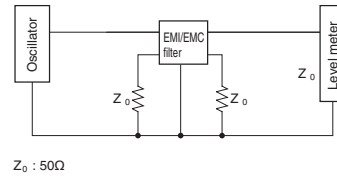
- All specifications in this catalog and production status of products are subject to change without notice. Prior to the purchase, please contact NEC TOKIN for updated product data.
- Please request for a specification sheet for detailed product data prior to the purchase.
- Before using the product in this catalog, please read "Precautions" and other safety precautions listed in the printed version catalog.

Measuring Circuit

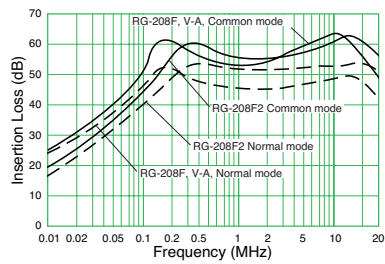
● Common mode



● Normal mode



Attenuation (Static Characteristics)



- All specifications in this catalog and production status of products are subject to change without notice. Prior to the purchase, please contact NEC TOKIN for updated product data.
- Please request for a specification sheet for detailed product data prior to the purchase.
- Before using the product in this catalog, please read "Precautions" and other safety precautions listed in the printed version catalog.

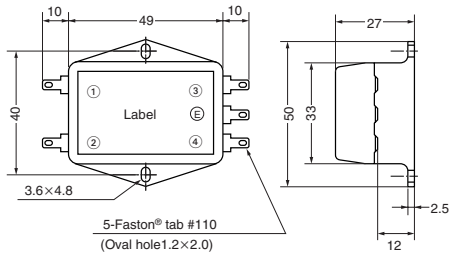
MR Series   

[RoHS Compliant]



| Model | Rated voltage AC/DC (V) | Rated current AC/DC (A) | Withstanding voltage 1 min., line to ground AC (V) | Insulation resistance 500VDC 1 min., line to ground (MΩ) min. | Leakage current 250V/60Hz, (mA) max. | Voltage drop 50Hz, (V) max. | Self-temperature rise (K) max. | Operating temperature rise (°C) | Certified standard | Weight (g) |
|---------|-------------------------|-------------------------|--|---|--------------------------------------|-----------------------------|--------------------------------|---------------------------------|--------------------|------------|
| MR-2021 | 250 | 2 | 1500 | 300 | 0.75 | 1.5 | 30 | -20 to +60 | UL, CSA, VDE | 35 |
| MR-2032 | 250 | 3 | 1500 | 300 | — | 1.5 | 30 | -20 to +60 | UL, CSA | 35 |
| MR-2043 | 250 | 4 | 1500 | 300 | 0.75 | 1.5 | 30 | -20 to +60 | UL, CSA, VDE | 40 |
| MR-2053 | 250 | 5 | 1500 | 300 | 0.75 | 1.5 | 30 | -20 to +60 | | 40 |
| MR-2054 | 250 | 5 | 1500 | 300 | 0.75 | 1.5 | 30 | -20 to +60 | | 40 |
| MR-2029 | 250 | 2 | 1500 | 300 | 0.5 | 1.5 | 30 | -20 to +60 | | 35 |
| MR-2059 | 250 | 5 | 1500 | 300 | 0.5 | 1.5 | 30 | -20 to +60 | | 35 |

Shape and Dimensions

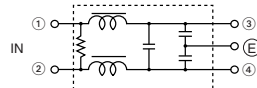


Caution: No (E) terminals on MR-2032.
 *Faston® is a registered trademark of Tyco Electronics AMP.

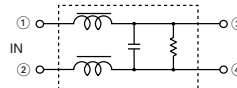
[mm]

Circuit Diagram

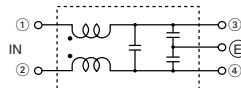
●MR-2021



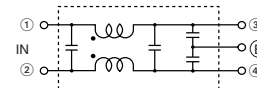
●MR-2032



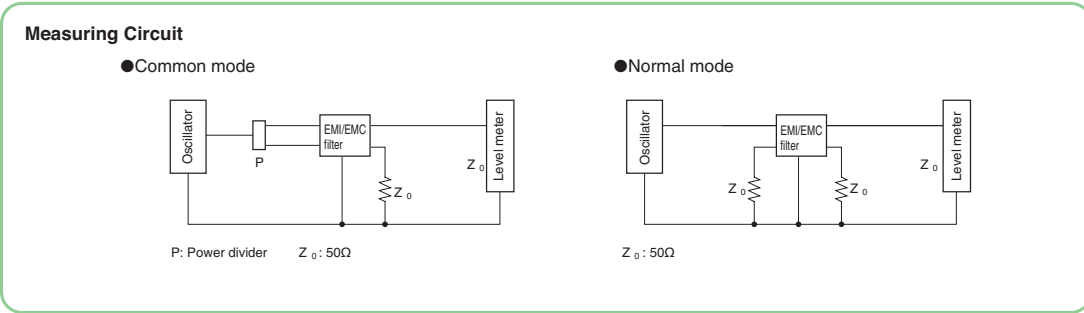
●MR-2043, MR-2053
 ●MR-2029, MR-2059



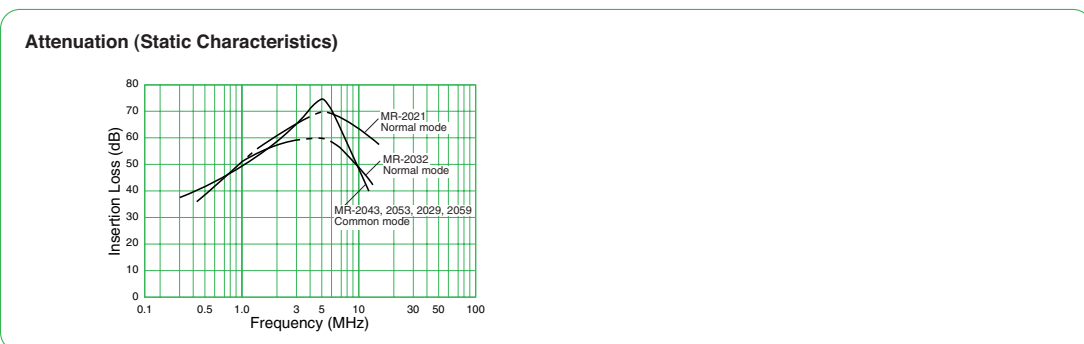
●MR-2054



- All specifications in this catalog and production status of products are subject to change without notice. Prior to the purchase, please contact NEC TOKIN for updated product data.
- Please request for a specification sheet for detailed product data prior to the purchase.
- Before using the product in this catalog, please read "Precautions" and other safety precautions listed in the printed version catalog.



大豪电子
 电话: 0775-83233025
<http://www.szdahao.com>
<http://www.very-tec.com>



- All specifications in this catalog and production status of products are subject to change without notice. Prior to the purchase, please contact NEC TOKIN for updated product data.
- Please request for a specification sheet for detailed product data prior to the purchase.
- Before using the product in this catalog, please read "Precautions" and other safety precautions listed in the printed version catalog.

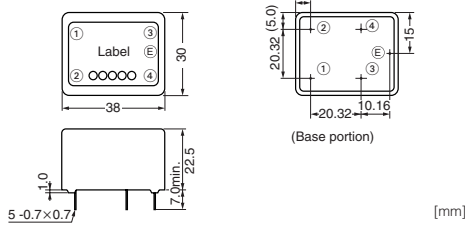
MA Series 

[RoHS Compliant]

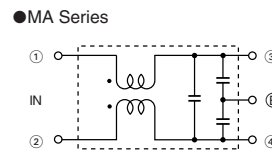


| Model | Rated voltage AC/DC (V) | Rated current AC/DC (A) | Withstanding voltage 1 min., line to ground AC (V) | Insulation resistance 500VDC 1 min., line to ground (MΩ) min. | Leakage current 250V/60Hz, (mA) max. | Voltage drop 50Hz, (V) max. | Self-temperature rise (K) max. | Operating temperature range (°C) | Certified standard | Weight (g) |
|---------|-------------------------|-------------------------|--|---|--------------------------------------|-----------------------------|--------------------------------|----------------------------------|--------------------|------------|
| MA-2013 | 250 | 1 | 1500 | 300 | 0.75 | 1 | 30 | -25 to +55 | UL, CSA, TÜV | 30 |
| MA-2023 | 250 | 2 | 1500 | 300 | 0.75 | 1 | 30 | -25 to +55 | UL, CSA, TÜV | 30 |
| MA-2033 | 250 | 3 | 1500 | 300 | 0.75 | 1 | 30 | -25 to +55 | UL, CSA, TÜV | 30 |
| MA-2043 | 250 | 4 | 1500 | 300 | 0.75 | 1 | 30 | -25 to +55 | UL, CSA, TÜV | 30 |
| MA-2053 | 250 | 5 | 1500 | 300 | 0.75 | 1 | 30 | -25 to +55 | UL, CSA, TÜV | 30 |

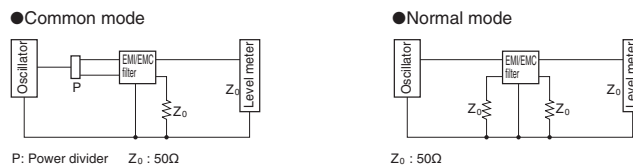
Shape and Dimensions



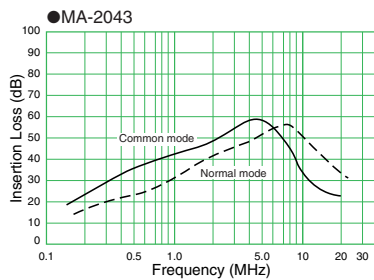
Circuit Diagram



Measuring Circuit



Attenuation (Static Characteristics)



- All specifications in this catalog and production status of products are subject to change without notice. Prior to the purchase, please contact NEC TOKIN for updated product data.
- Please request for a specification sheet for detailed product data prior to the purchase.
- Before using the product in this catalog, please read "Precautions" and other safety precautions listed in the printed version catalog.

GL Series

C Type     

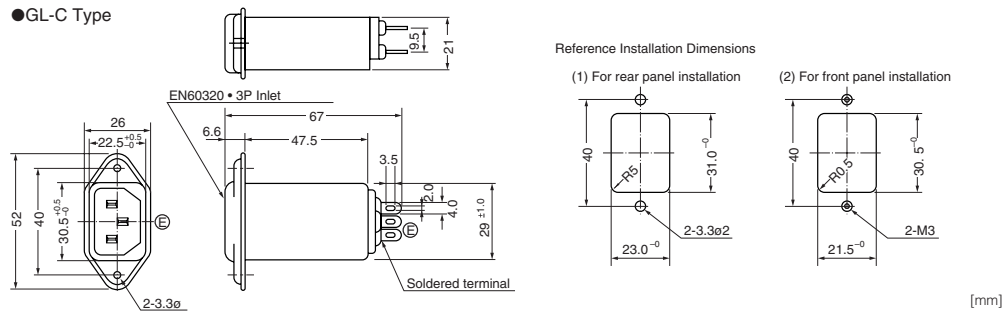
[RoHS Compliant]



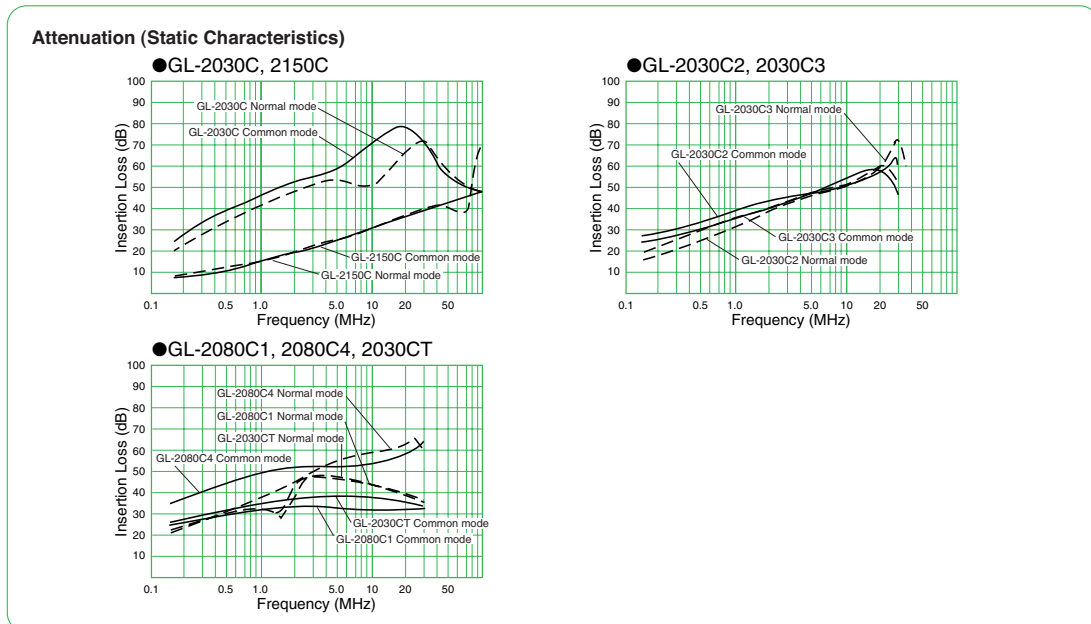
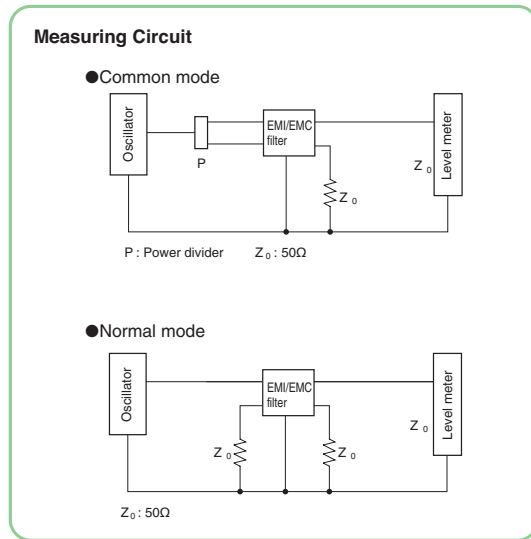
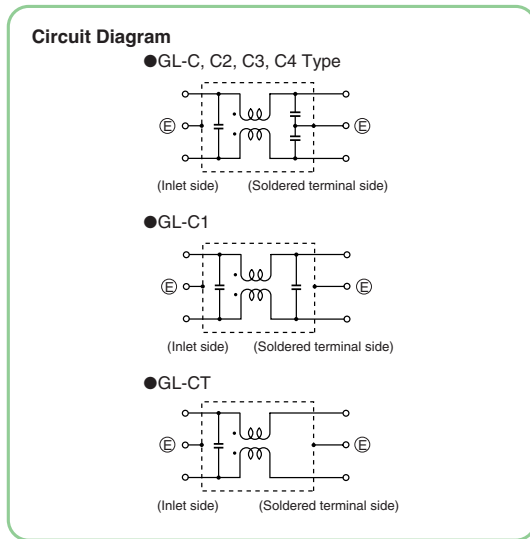
| Model | Rated voltage AC/DC (V) | Rated current AC/DC (A) | Withstanding voltage 1 min., line to ground AC (V) | Insulation resistance 500VDC 1 min., line to ground (MΩ) min. | Leakage current 250V/60Hz, (μA) max. | Voltage drop 50Hz, (V) max. | Self-temperature rise (K) max. | Operating temperature range (°C) | Certified standard | Weight (g) |
|-----------|-------------------------|-------------------------|--|---|--------------------------------------|-----------------------------|--------------------------------|----------------------------------|--------------------|------------|
| GL-2030C | 250 | 3 | 1500 | 300 | 500 | 1 | 30 | -25 to +55 | UL, CSA, TÜV, VDE | 55 |
| GL-2060C | 250 | 6 | 1500 | 300 | 500 | 1 | 30 | -25 to +55 | UL, CSA, TÜV, VDE | 55 |
| GL-2100C | 250 | 10 | 1500 | 300 | 500 | 1 | 30 | -25 to +55 | UL, CSA, TÜV | 55 |
| GL-2150C | 250 | 15 | 1500 | 300 | 500 | 1 | 30 | -25 to +55 | UL, CSA, TÜV | 55 |
| GL-2030C2 | 250 | 3 | 1500 | 300 | 500 | 1 | 30 | -25 to +55 | UL, CSA, TÜV | 55 |
| GL-2030C3 | 250 | 3 | 1500 | 300 | 500 | 1 | 30 | -25 to +55 | UL, CSA, TÜV | 55 |
| GL-2060C3 | 250 | 6 | 1500 | 300 | 500 | 1 | 30 | -25 to +55 | UL, CSA, TÜV | 55 |
| GL-2060C1 | 250 | 6 | 1500 | 300 | 5 | 1 | 30 | -25 to +55 | UL, CSA | 55 |
| GL-2080C1 | 250 | 8 | 1500 | 300 | 5 | 1 | 30 | -25 to +55 | UL, CSA, TÜV | 55 |
| GL-2080C4 | 250 | 8 | 1500 | 300 | 500 | 1 | 30 | -25 to +55 | UL, CSA, TÜV | 55 |
| GL-2030CT | 250 | 3 | 1500 | 300 | 5 | 1 | 30 | -25 to +55 | UL | 55 |
| GL-2060C4 | 250 | 6 | 1500 | 300 | 500 | 1 | 30 | -25 to +55 | UL, CSA, TÜV | 55 |

Shape and Dimensions

●GL-C Type



- All specifications in this catalog and production status of products are subject to change without notice. Prior to the purchase, please contact NEC TOKIN for updated product data.
- Please request for a specification sheet for detailed product data prior to the purchase.
- Before using the product in this catalog, please read "Precautions" and other safety precautions listed in the printed version catalog.



大豪电子

电话: 0775-83233025

http://www.szdahao.com

http://www.very-tec.com



- All specifications in this catalog and production status of products are subject to change without notice. Prior to the purchase, please contact NEC TOKIN for updated product data.
- Please request for a specification sheet for detailed product data prior to the purchase.
- Before using the product in this catalog, please read "Precautions" and other safety precautions listed in the printed version catalog.

GL Series

F, FV, FVP Type 

[RoHS Compliant]

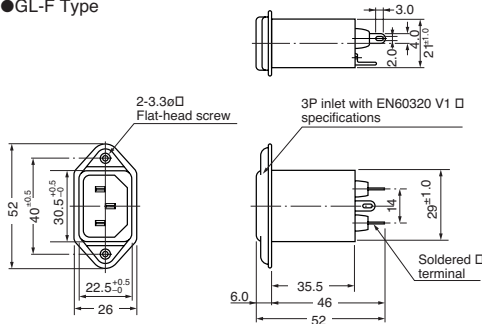


| Model | Rated voltage AC/DC (V) | Rated current AC/DC (A) | Withstanding voltage 1 min., line to ground AC (V) | Insulation resistance 500VDC 1 min., line to ground (MΩ) min. | Leakage current 250V/60Hz, (mA) max. | Voltage drop 50Hz, (V) max. | Self-temperature rise (K) max. | Operating temperature range (°C) | Certified standard | Weight (g) |
|---------------|-------------------------|-------------------------|--|---|--------------------------------------|-----------------------------|--------------------------------|----------------------------------|---------------------------------|------------|
| GL-2030F | 250 | 3 | 1500 | 300 | 0.5 | 1 | 30 | -25 to +55 | UL, CSA, TÜV, VDE | 40 |
| GL-2060F | 250 | 6 | 1500 | 300 | 0.5 | 1 | 30 | -25 to +55 | UL, CSA, TÜV, VDE | 40 |
| GL-2030FV | 250 | 3 | 1500 | 300 | 0.5 | 1 | 30 | -25 to +55 | UL, CSA, TÜV, SEMKO, FIMKO, VDE | 40 |
| GL-2060FV | 250 | 6 | 1500 | 300 | 0.5 | 1 | 30 | -25 to +55 | UL, CSA, TÜV, SEMKO, FIMKO, VDE | 40 |
| GL-2080FVP | 250 | 8 | 1500 | 300 | 0.2 | 1 | 30 | -25 to +55 | cULus | 50 |
| GL-2060FVP-XL | 250 | 6 | 1500 | 300 | 0.1 | 1 | 30 | -25 to +55 | — | 90 |

*FV and FVP types are also available with Faston® terminal.
*Faston® is a registered trademark of Tyco Electronics AMP.

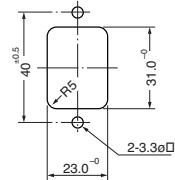
Shape and Dimensions

●GL-F Type

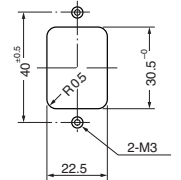


Reference installation dimensions

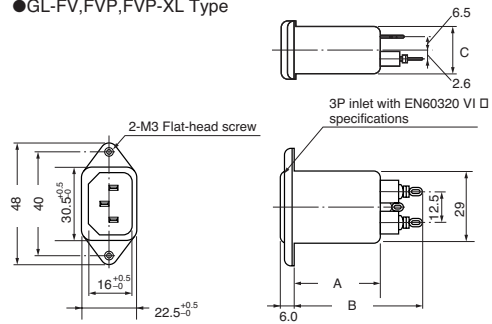
(1) For rear panel installation



(2) For front panel installation



●GL-FV, FVP, FVP-XL Type

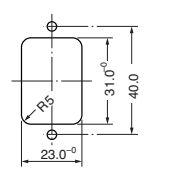


| Model | A | B | C |
|-----------|------|------|------|
| GL-FV | 35.5 | 50.0 | 21.0 |
| GL-FVP | 47.5 | 61.0 | 21.0 |
| GL-FVP-XL | 69.5 | 82.8 | 22.0 |

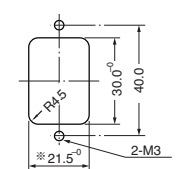
[mm]

Reference installation dimensions

(1) For rear panel installation



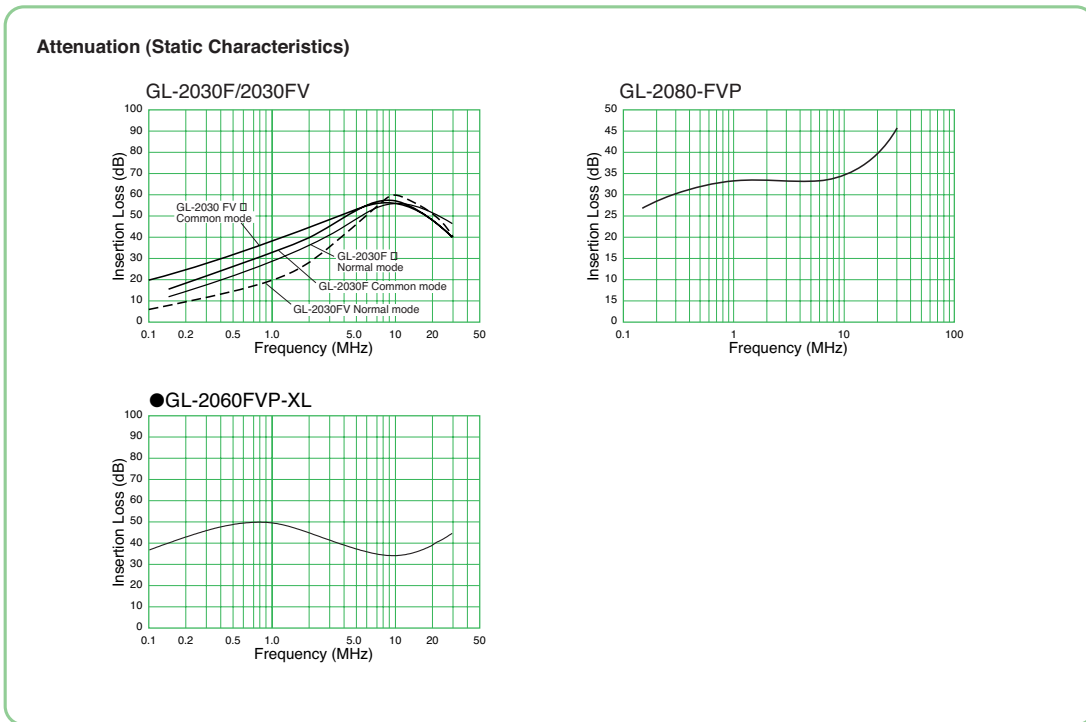
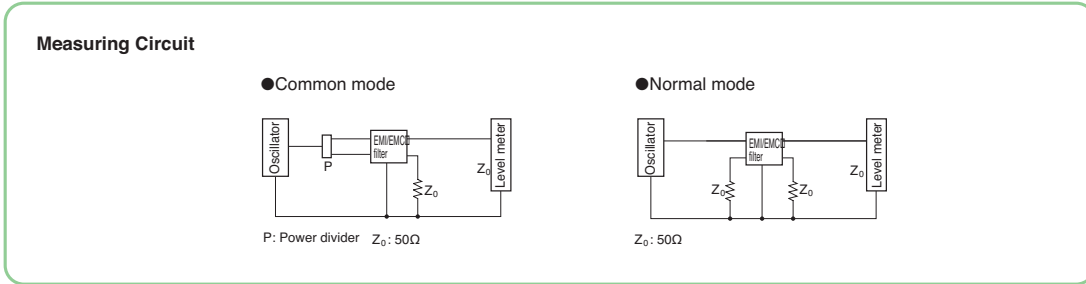
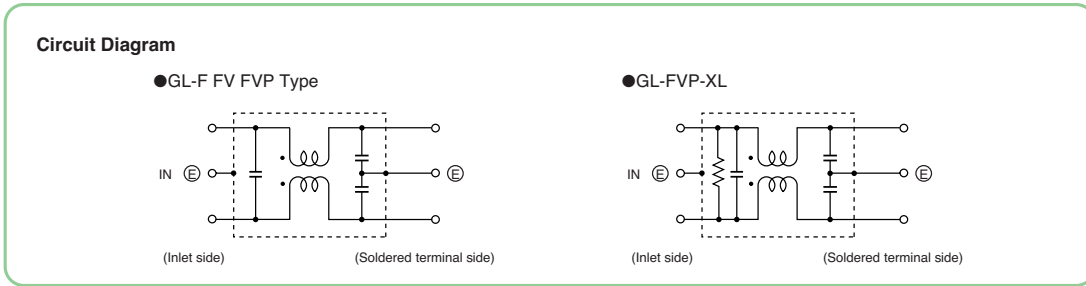
(2) For front panel installation



※22.5 for GL-2060FVP-XL



- All specifications in this catalog and production status of products are subject to change without notice. Prior to the purchase, please contact NEC TOKIN for updated product data.
- Please request for a specification sheet for detailed product data prior to the purchase.
- Before using the product in this catalog, please read "Precautions" and other safety precautions listed in the printed version catalog.



- All specifications in this catalog and production status of products are subject to change without notice. Prior to the purchase, please contact NEC TOKIN for updated product data.
- Please request for a specification sheet for detailed product data prior to the purchase.
- Before using the product in this catalog, please read "Precautions" and other safety precautions listed in the printed version catalog.

GL Series

H Type   

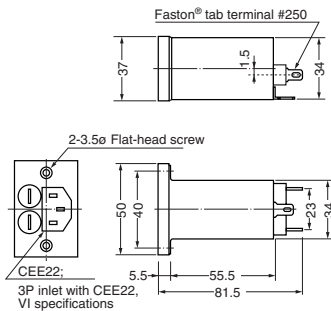
[RoHS Compliant]



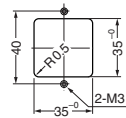
| Model | Rated voltage AC/DC (V) | Rated current AC/DC (A) | Withstanding voltage 1 min., line to ground AC (V) | Insulation resistance 500VDC 1 min., line to ground (MΩ) min. | Leakage current 250V/60Hz, (mA) max. | Voltage drop 50Hz, (V) max. | Self-temperature rise (K) max. | Operating temperature range (°C) | Certified standard | Weight (g) |
|-----------|-------------------------|-------------------------|--|---|--------------------------------------|-----------------------------|--------------------------------|----------------------------------|--------------------|------------|
| GL-2030H2 | 250 | 3 | 1500 | 300 | 0.5 | 1 | 30 | -25 to +55 | TÜV | 90 |
| GL-2060H2 | 250 | 6 | 1500 | 300 | 0.5 | 1 | 30 | -25 to +55 | TÜV | 90 |

Shape and Dimensions

●GL-H2 Type (2-fuse type)



Reference installation dimensions for front panel installation



*Faston® is a registered trademark of Tyco Electronics AMP.

[mm]

大豪电子

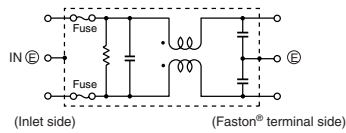
电话: 0775-83233025

http://www.szdahao.com

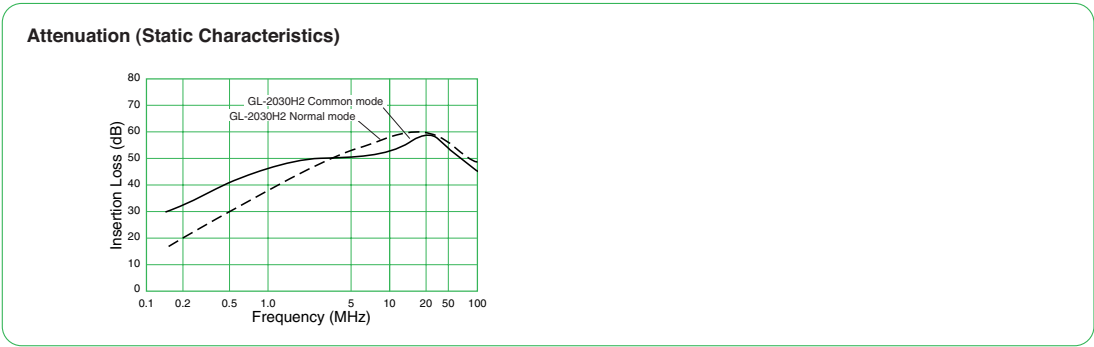
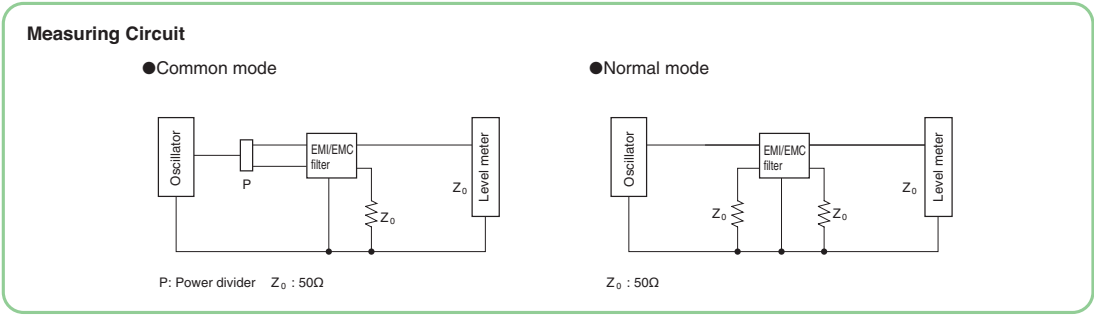
http://www.very-tec.com

Circuit Diagram

●GL-H2 Type



- All specifications in this catalog and production status of products are subject to change without notice. Prior to the purchase, please contact NEC TOKIN for updated product data.
- Please request for a specification sheet for detailed product data prior to the purchase.
- Before using the product in this catalog, please read "Precautions" and other safety precautions listed in the printed version catalog.



- All specifications in this catalog and production status of products are subject to change without notice. Prior to the purchase, please contact NEC TOKIN for updated product data.
- Please request for a specification sheet for detailed product data prior to the purchase.
- Before using the product in this catalog, please read "Precautions" and other safety precautions listed in the printed version catalog.

GL Series

M Type   

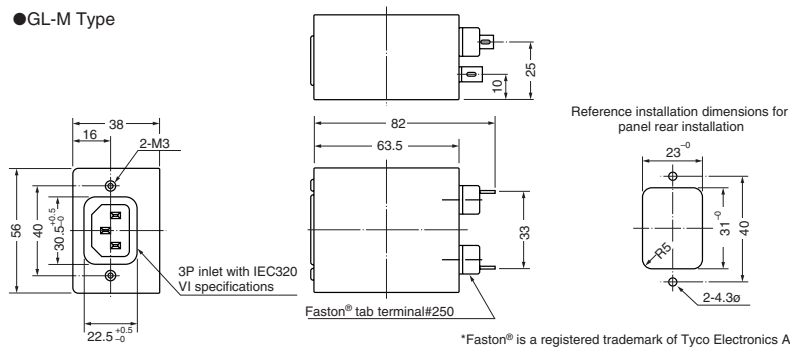
[RoHS Compliant]



| Model | Rated voltage AC/DC (V) | Rated current AC/DC (A) | Withstanding voltage 1 min., line to ground AC (V) | Insulation resistance 500VDC 1 min., line to ground (MΩ) min. | Leakage current 250V/60Hz, (mA) max. | Voltage drop 50Hz, (V) max. | Self-temperature rise (K) max. | Operating temperature range (°C) | Certified standard | Weight (g) |
|----------|-------------------------|-------------------------|--|---|--------------------------------------|-----------------------------|--------------------------------|----------------------------------|--------------------|------------|
| GL-2030M | 250 | 3 | 1500 | 300 | 0.5 | 1 | 30 | -25 to +55 | UL, CSA, TÜV | 200 |
| GL-2060M | 250 | 6 | 1500 | 300 | 0.5 | 1 | 30 | -25 to +55 | UL, CSA, TÜV | 205 |
| GL-2100M | 250 | 10 | 1500 | 300 | 0.5 | 1 | 30 | -25 to +55 | UL, CSA, TÜV | 210 |

Shape and Dimensions

●GL-M Type

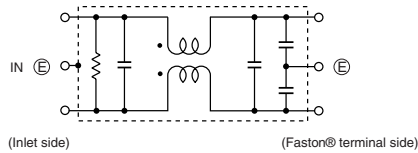


*Faston® is a registered trademark of Tyco Electronics AMP.

[mm]

Circuit Diagram

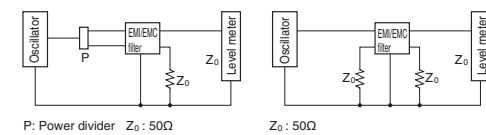
●GL-M Type



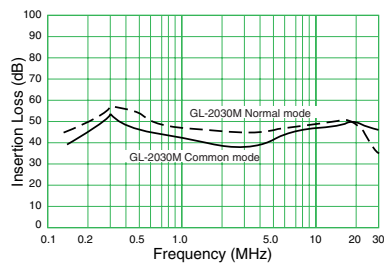
Measuring Circuit

●Common mode

●Normal mode



Attenuation (Static Characteristics)



- All specifications in this catalog and production status of products are subject to change without notice. Prior to the purchase, please contact NEC TOKIN for updated product data.
- Please request for a specification sheet for detailed product data prior to the purchase.
- Before using the product in this catalog, please read "Precautions" and other safety precautions listed in the printed version catalog.

TÜV Rheinland Japan Ltd.
Certification Numbers

| Page | Item | File No. | |
|------|----------------------------|------------|----------------|
| 21 | LF-3000 Series | LF-3200 | No.R50014468 |
| | | LF-3300 | |
| | | LF-3400 | No.R50014560 |
| | | LF-3500 | No.R5008093 |
| | | LF-3600 | No.R50014465 |
| 25 | LH Series | LH-3304 | No.R50133298 |
| | | LH-3404 | |
| | | LH-3604 | |
| | | LH-3804 | |
| | | LH-31204 | |
| | | LH-31504 | |
| 26 | HFP Series | HFP-2153 | No.R50014217 |
| | | HFP-2303 | No.R50013926 |
| | | HFP-2303A1 | No.R50014219 |
| | | HFP-4153A | No.R50015970 |
| | | HFP-4503A | No.J8830914 |
| 28 | GT Series Screw Terminal | GT-220U | No. R9651191 |
| | | GT-205U | |
| | | GT-210U | |
| 30 | GT Series Faston® Terminal | GT-20301 | No.R50015833 |
| | | GT-20601 | |
| | | GT-21001 | |
| | | GT-20302 | No.R50014761 |
| | | GT-205J | |
| | | GT-210J | |
| | | GT-215J | |
| 32 | GT Series for VCCI | GT-21001V | No.R2-50004761 |
| 34 | VU Series | VU-220F | No.R50015793 |
| 36 | VC Series | VC-215F3V | No.R50013342 |
| 38 | RG Series | RG-208F | No.R2-50006637 |
| | | RG-208F1 | |
| | | RG-208F2 | No.R50013629 |
| | | RG-208V-A | No.R2-50006637 |

| Page | Item | File No. | |
|-----------|------------------|-----------|------------------|
| 42 | MA Series | MA-2013 | No.R50015843 |
| | | MA-2023 | |
| | | MA-2033 | |
| | | MA-2043 | |
| | | MA-2053 | |
| 43 | GL Series C Type | GL-2030C | No.R50013357 |
| | | GL-2060C | |
| | | GL-2100C | No.R50014260 |
| | | GL-2150C | No.R50014261 |
| | | GL-2030C2 | No.R50013357 |
| | | GL-2030C3 | |
| | | GL-2060C3 | |
| | | GL-2080C1 | |
| 45 | GL Series F Type | GL-2080C4 | No.R50014166 |
| | | GL-2060C4 | No.R50013357 |
| | | GL-2030F | No.R50013360 |
| | | GL-2060F | |
| | | 47 | GL Series H Type |
| GL-2060FV | | | |
| 49 | GL Series M Type | GL-2030H2 | No.R50015796 |
| | | GL-2060H2 | |
| 49 | GL Series M Type | GL-2030M | No.R50013384 |
| | | GL-2060M | |
| | | GL-2100M | |

大豪电子

电话: 0775-83233025

<http://www.szdahao.com>

<http://www.very-tec.com>



- All specifications in this catalog and production status of products are subject to change without notice. Prior to the purchase, please contact NEC TOKIN for updated product data.
- Please request for a specification sheet for detailed product data prior to the purchase.
- Before using the product in this catalog, please read "Precautions" and other safety precautions listed in the printed version catalog.

Precautions



- The names of the products and the specifications in this catalog are subject to change without notice for the sake of improvement. The manufacturer also reserves the right to discontinue any of these products. At the time of delivery, please ask for specifications sheets to check the contents in order to use the products properly and safely.
- Descriptions in this catalog regarding product characteristics and quality are based solely on discrete components. When using these components, be sure to check the specifications with the component in question mounted on the products.
- The manufacturer's warranty will not cover any disadvantage or damage caused by improper use of the products that deviates from the characteristics, specifications, or conditions for use described in this catalog.
- The products in this catalog are intended for use in ordinary electronic products. If any of these products are to be used in special applications requiring extremely high reliability, such as in aviation equipment and nuclear power controllers where product defects might pose a safety risk, please consult your NEC TOKIN sales representatives.
- Though the manufacturer has taken all possible precautions to ensure the quality and reliability of its products, improper use of products may result in bodily injury, fire, or similar accident. If you have any questions regarding the use of the products in question, please consult your NEC TOKIN sales representatives.
- Please be advised that the manufacturer accepts no responsibility for any infraction by users of the manufacturer's products on third party patents or industrial copyrights. The manufacturer is responsible only when such infractions are attributable to the structural design of the product and its manufacturing process.
- Export Control
For customers outside Japan
NEC TOKIN products should not be used or sold for use in the development, production, stockpiling or utilization of any conventional weapons or mass-destructive weapons(nuclear weapons, chemical or biological weapons, or missiles), or any other weapons.
For customers in Japan
For products which are controlled items subject to the "Foreign Exchange and Foreign Trade Law" of Japan, the export license specified by the law is required for export.
- This catalog is current as of March 2010.



- All specifications in this catalog and production status of products are subject to change without notice. Prior to the purchase, please contact NEC TOKIN for updated product data.
- Please request for a specification sheet for detailed product data prior to the purchase.
- Before using the product in this catalog, please read "Precautions" and other safety precautions listed in the printed version catalog.